



**Water Monitoring Result at C7 - Windsor House
Mid-Flood Tide**

Date	Time	Weather Condition	Sampling Depth		Water Temperature			pH			Salinity			DO Saturation			DO			Turbidity			Suspended Solids	
					°C			-			ppt			%			mg/L			NTU			mg/L	
					Value	Average		Value	Average		Value	Average		Value	Average		Value	Average		Value	Average		Value	Average
27/6/2016	11:50	Sunny	Middle	-	28.80	28.80	28.90	8.53	8.53	8.57	26.08	26.08	26.07	78.1	78.6	77.7	5.21	5.24	5.18	8.77	8.77	8.76	6	7.00
	11:52		Middle	-	29.00	29.00		8.60	8.60		26.06	26.06		76.8	77.1		5.12	5.14		8.76	8.74		8	
30/6/2016	16:31	Fine	Middle	-	28.90	28.90	28.85	8.73	8.73	8.73	24.26	24.26	24.21	62.2	59.6	59.4	4.20	4.02	4.01	7.21	7.33	7.34	6	5.50
	16:33		Middle	-	28.80	28.80		8.72	8.72		24.16	24.16		58.4	57.3		3.95	3.87		7.41	7.41		5	
2/7/2016	16:05	Cloudy	Middle	-	28.50	28.50	28.50	8.64	8.64	8.66	23.20	23.20	23.20	57.8	57.6	57.9	3.94	3.93	3.94	8.82	8.81	8.81	4	4.00
	16:07		Middle	-	28.50	28.50		8.67	8.67		23.20	23.20		58.0	58.0		3.95	3.95		8.78	8.81		4	
4/7/2016	17:40	Fine	Middle	-	28.00	28.00	28.00	8.34	8.34	8.35	24.48	24.48	24.48	75.0	75.1	75.1	5.11	5.11	5.12	8.83	8.85	8.80	8	8.00
	17:41		Middle	-	28.00	28.00		8.35	8.35		24.48	24.48		74.8	75.3		5.10	5.14		8.72	8.80		8	
6/7/2016	17:45	Cloudy	Middle	-	27.40	27.40	27.45	8.30	8.30	8.33	24.28	24.28	24.29	71.5	72.3	71.7	4.93	4.99	4.95	2.54	2.55	2.54	5	4.50
	17:46		Middle	-	27.50	27.50		8.35	8.35		24.29	24.29		72.0	71.0		4.97	4.90		2.50	2.56		4	
8/7/2016	21:15	Fine	Middle	-	29.40	29.40	29.45	8.49	8.49	8.49	26.15	26.15	26.15	76.2	77.1	77.2	5.03	5.09	5.09	3.66	3.24	3.28	7	7.50
	21:16		Middle	-	29.50	29.50		8.49	8.49		26.15	26.15		78.0	77.3		5.12	5.10		3.09	3.11		8	
11/7/2016	20:46	Cloudy	Middle	-	27.30	27.30	27.35	8.44	8.44	8.43	27.83	27.83	27.83	73.3	74.2	73.6	4.96	5.02	4.98	3.48	3.50	3.51	6	7.00
	20:47		Middle	-	27.40	27.40		8.42	8.42		27.83	27.83		73.3	73.4		4.97	4.97		3.53	3.51		8	
14/7/2016	1:06	Cloudy	Middle	-	27.20	27.20	27.25	8.38	8.38	8.38	27.28	27.28	27.28	71.9	72.0	71.8	4.89	4.90	4.88	3.84	3.78	3.82	6	5.50
	1:07		Middle	-	27.30	27.30		8.38	8.38		27.28	27.28		72.1	71.0		4.91	4.83		3.80	3.86		5	
16/7/2016	16:15	Fine	Middle	-	28.70	28.70	28.80	8.31	8.31	8.32	25.40	25.40	25.40	90.3	90.6	90.3	6.06	6.08	6.06	2.99	3.06	3.02	5	4.50
	16:17		Middle	-	28.90	28.90		8.33	8.33		25.39	25.39		90.3	90.0		6.06	6.03		3.01	3.01		4	
18/7/2016	16:00	Fine	Middle	-	29.40	29.40	29.50	8.37	8.37	8.41	26.00	26.00	26.00	106.3	106.2	105.5	7.02	7.01	6.96	2.99	3.00	2.95	4	3.50
	16:02		Middle	-	29.60	29.60		8.45	8.45		26.00	26.00		104.6	104.7		6.90	6.90		2.94	2.88		3	
20/7/2016	18:22	Cloudy	Middle	-	27.90	27.90	27.93	7.89	7.89	7.89	27.78	27.78	27.78	77.9	78.2	78.3	5.30	5.33	5.33	3.74	3.71	3.75	4	3.50
	18:23		Middle	-	28.00	27.90		7.89	7.89		27.78	27.78		78.5	78.4		5.31	5.37		3.76	3.80		3	
22/7/2016	20:16	Fine	Middle	-	27.30	27.30	27.35	7.62	7.62	7.62	30.10	30.10	30.10	74.5	75.2	74.5	4.98	5.02	4.98	9.92	9.98	9.97	6	7.00
	20:18		Middle	-	27.40	27.40		7.62	7.62		30.10	30.10		73.9	74.4		4.94	4.97		9.99	9.99		8	
25/7/2016	10:50	Fine	Middle	-	27.40	27.40	27.45	8.09	8.09	8.09	31.09	31.09	31.09	77.9	80.2	79.0	5.17	5.33	5.25	7.15	7.14	7.12	10	9.50
	10:52		Middle	-	27.50	27.50		8.08	8.08		31.09	31.09		79.3	78.7		5.27	5.23		7.14	7.03		9	

Remarks:
Single underline denotes exceedance over Action Level.
Double underline denotes exceedance over Limit Level.



**Water Monitoring Result at C1 - HKCEC Extension
Mid-Flood Tide**

Date	Time	Weather Condition	Sampling Depth		Water Temperature			pH			Salinity			DO Saturation			DO		Turbidity			Suspended Solids		
					°C			-			ppt			%			mg/L		NTU			mg/L		
					Value	Average		Value	Average		Value	Average		Value	Average		Value	Average		Value	Average	Value	Average	Value
27/6/2016	11:13	Sunny	Middle	2.5	28.00	28.00	28.00	8.69	8.69	8.70	26.70	26.70	26.70	66.2	65.4	65.6	4.47	4.40	4.42	5.94	5.91	6.03	3	2.50
	11:15		Middle	2.5	28.00	28.00		8.71	8.71		26.69	26.69		65.6	65.0		4.42	4.39		4.42	6.08		6.18	
30/6/2016	15:48	Fine	Middle	2.5	28.00	28.10	28.08	8.81	8.81	8.82	25.05	25.05	25.06	71.4	70.2	69.4	4.86	4.77	4.70	5.64	5.75	5.77	7	6.00
	15:50		Middle	2.5	28.10	28.10		8.83	8.83		25.07	25.07		68.3	67.8		4.64	4.54		4.70	5.80		5.88	
2/7/2016	17:42	Cloudy	Middle	2.5	27.90	27.90	27.90	8.76	8.76	8.77	24.24	24.24	24.25	64.6	62.9	62.6	4.43	4.32	4.29	9.99	9.82	9.82	7	6.00
	17:44		Middle	2.5	27.90	27.90		8.77	8.77		24.26	24.26		61.7	61.1		4.23	4.19		4.29	9.78		9.69	
4/7/2016	16:30	Fine	Middle	3.0	27.70	27.70	27.75	8.58	8.58	8.58	24.91	24.91	24.91	69.2	70.0	69.7	4.74	4.80	4.77	8.56	8.62	8.60	5	5.00
	16:32		Middle	3.0	27.80	27.80		8.57	8.57		24.90	24.90		69.2	70.3		4.74	4.81		4.77	8.61		8.59	
6/7/2016	21:11	Cloudy	Middle	2.0	27.60	27.60	27.65	8.51	8.51	8.52	25.33	25.33	25.33	70.4	70.5	70.9	4.81	4.82	4.85	5.65	5.90	5.80	8	7.50
	21:12		Middle	2.0	27.70	27.70		8.52	8.52		25.33	25.33		71.2	71.4		4.87	4.88		4.85	5.87		5.79	
8/7/2016	23:40	Fine	Middle	2.5	29.80	29.90	29.83	8.38	8.38	8.39	27.18	27.18	27.18	74.0	73.9	74.5	4.77	4.76	4.80	4.36	4.38	4.29	6	6.50
	23:41		Middle	2.5	29.80	29.80		8.39	8.40		27.18	27.18		74.8	75.4		4.82	4.86		4.80	4.22		4.19	
11/7/2016	0:27	Cloudy	Middle	2.0	27.30	27.30	27.35	8.26	8.26	8.32	27.68	27.68	27.69	72.7	72.4	72.5	4.93	4.91	4.92	3.82	3.98	3.85	10	9.50
	0:28		Middle	2.0	27.40	27.40		8.38	8.38		27.70	27.70		72.7	72.3		4.93	4.90		4.92	3.95		3.66	
14/7/2016	3:40	Cloudy	Middle	2.5	26.90	26.90	26.93	8.29	8.29	8.32	27.65	27.65	27.65	74.4	74.9	74.8	5.08	5.11	5.10	2.63	2.61	2.60	11	10.50
	3:41		Middle	2.5	27.00	26.90		8.34	8.34		27.64	27.64		74.9	74.8		5.11	5.10		5.10	2.60		2.57	
16/7/2016	18:03	Fine	Middle	2.5	27.30	27.30	27.30	8.48	8.48	8.47	27.32	27.32	27.32	82.5	81.7	81.1	5.61	5.56	5.51	4.01	3.83	3.98	7	6.00
	18:05		Middle	2.5	27.30	27.30		8.46	8.46		27.32	27.32		80.6	79.4		5.48	5.40		5.51	3.95		4.13	
18/7/2016	17:53	Fine	Middle	2.5	27.30	27.30	20.48	8.58	8.58	8.58	27.39	27.39	27.39	90.3	90.9	87.9	6.14	6.16	6.11	4.73	4.82	4.85	10	10.50
	17:55		Middle	2.5	0.00	27.30		8.58	8.58		27.38	27.38		90.3	80.0		6.14	5.98		6.11	4.94		4.91	
20/7/2016	17:15	Cloudy	Middle	2.5	27.60	27.60	27.65	8.45	8.45	8.45	27.77	27.77	27.77	84.8	85.4	85.2	5.72	5.76	5.75	4.20	4.22	4.25	6	6.00
	17:17		Middle	2.5	27.70	27.70		8.44	8.44		27.77	27.77		85.9	84.5		5.80	5.70		5.75	4.22		4.35	
22/7/2016	22:21	Fine	Middle	3.0	28.30	28.30	28.30	7.82	7.82	7.81	30.80	30.80	30.81	74.0	74.2	73.9	4.85	4.87	4.85	5.51	5.43	5.40	7	6.50
	22:22		Middle	3.0	28.30	28.30		7.80	7.80		30.81	30.81		74.0	73.5		4.86	4.82		4.85	5.40		5.26	
25/7/2016	10:00	Fine	Middle	3.0	25.40	25.40	25.45	8.23	8.23	8.23	31.81	31.81	31.81	76.5	77.9	77.9	5.24	5.34	5.34	4.30	4.14	4.17	6	5.50
	10:02		Middle	3.0	25.50	25.50		8.22	8.22		31.81	31.81		78.1	79.0		5.35	5.41		5.34	4.11		4.12	

Remarks:
Single underline denotes exceedance over Action Level.
Double underline denotes exceedance over Limit Level.



**Water Monitoring Result at P1 - HKCEC Phase I
Mid-Flood Tide**

Date	Time	Weater Condition	Sampling Depth		Water Temperature			pH			Salinity			DO Saturation			DO			Turbidity			Suspended Solids	
					°C			-			ppt			%			mg/L			NTU			mg/L	
					Value	Average		Value	Average		Value	Average		Value	Average		Value	Average		Value	Average		Value	Average
27/6/2016	10:57	Sunny	Middle	2.5	28.80	28.80	28.80	8.58	8.58	8.60	27.03	27.03	27.04	67.9	66.5	66.6	4.51	4.42	4.43	7.28	7.24	7.23	5	5.50
	10:59		Middle	2.5	28.80	28.80		8.61	8.61		27.04	27.04		66.2	65.8		4.40	4.37		7.21	7.20		6	
30/6/2016	15:32	Fine	Middle	2.5	29.30	29.30	29.35	8.59	8.59	8.63	24.96	24.96	24.93	61.3	61.5	60.9	4.08	4.10	4.06	6.34	6.43	6.52	5	6.00
	15:34		Middle	2.5	29.40	29.40		8.66	8.66		24.90	24.90		60.9	59.7		4.06	3.98		6.61	6.68		7	
2/7/2016	17:26	Cloudy	Middle	2.5	28.50	28.50	28.50	8.59	8.59	8.62	24.14	24.14	24.14	59.4	57.9	57.4	4.00	3.93	3.89	8.82	8.70	8.75	6	5.50
	17:28		Middle	2.5	28.50	28.50		8.64	8.64		24.13	24.13		56.6	55.5		3.84	3.77		8.73	8.76		5	
4/7/2016	16:10	Fine	Middle	3.0	29.20	29.20	29.30	8.52	8.52	8.56	23.51	27.51	24.51	74.6	75.2	74.1	5.02	5.05	4.98	7.97	7.96	7.97	5	4.50
	16:12		Middle	3.0	29.40	29.40		8.60	8.60		23.50	23.50		74.3	72.3		4.99	4.86		7.96	7.97		4	
6/7/2016	19:56	Cloudy	Middle	2.0	27.90	27.90	27.95	8.47	8.47	8.48	24.87	24.87	24.88	78.3	79.2	78.6	5.33	5.39	5.35	4.19	4.01	3.99	5	5.00
	19:57		Middle	2.0	28.00	28.00		8.48	8.48		24.89	24.89		78.4	78.5		5.34	5.35		3.90	3.85		5	
8/7/2016	23:10	Fine	Middle	2.5	29.60	29.60	29.65	8.49	8.49	8.50	26.85	26.85	26.84	73.6	73.8	74.3	4.83	4.86	4.88	4.77	4.79	4.51	6	6.50
	23:11		Middle	2.5	29.70	29.70		8.50	8.50		26.83	26.83		74.6	75.2		4.89	4.93		4.23	4.25		7	
11/7/2016	22:40	Cloudy	Middle	2.0	27.50	27.50	27.55	8.43	8.43	8.45	28.06	28.06	28.06	79.0	79.5	79.1	5.33	5.36	5.33	5.79	5.91	5.82	8	7.50
	22:41		Middle	2.0	27.60	27.60		8.46	8.46		28.06	28.06		79.0	78.7		5.33	5.31		5.93	5.66		7	
14/7/2016	3:11	Cloudy	Middle	2.5	27.00	27.00	27.05	8.41	8.41	8.42	28.18	28.18	28.18	76.8	76.2	76.0	5.20	5.18	5.16	2.40	2.34	2.52	6	6.00
	3:12		Middle	2.5	27.10	27.10		8.43	8.43		28.18	28.18		76.0	75.0		5.16	5.10		2.74	2.61		6	
16/7/2016	17:47	Fine	Middle	2.5	28.40	28.40	28.50	8.35	8.35	8.38	26.83	26.83	26.55	77.2	76.1	77.4	5.15	5.09	5.18	3.08	3.23	3.21	5	5.50
	17:49		Middle	2.5	28.60	28.60		8.40	8.40		26.26	26.26		76.9	79.5		5.14	5.32		3.29	3.24		6	
18/7/2016	17:37	Fine	Middle	2.5	28.60	28.60	28.65	8.45	8.45	8.47	27.13	27.13	27.12	82.1	80.7	83.0	5.47	5.37	5.53	5.02	5.00	5.01	10	10.00
	17:39		Middle	2.5	28.70	28.70		8.49	8.49		27.10	27.10		85.0	84.1		5.66	5.60		4.99	5.02		10	
20/7/2016	16:59	Cloudy	Middle	2.5	28.50	28.50	28.50	8.42	8.42	8.44	27.49	27.49	27.50	82.5	81.5	81.3	5.50	5.45	5.42	3.44	3.38	3.39	6	6.50
	17:01		Middle	2.5	28.50	28.50		8.46	8.46		27.50	27.50		80.9	80.2		5.39	5.34		3.36	3.36		7	
22/7/2016	21:53	Fine	Middle	3.0	28.30	28.30	28.30	7.81	7.81	7.81	30.46	30.46	30.46	77.8	78.6	77.6	5.11	5.17	5.11	6.65	6.60	6.50	4	4.50
	21:54		Middle	3.0	28.30	28.30		7.81	7.81		30.46	30.46		77.4	76.7		5.08	5.06		6.48	6.25		5	
25/7/2016	9:40	Fine	Middle	3.0	26.60	26.60	26.70	8.19	8.19	8.19	32.16	32.16	32.16	77.9	77.4	77.1	5.21	5.17	5.15	5.20	5.08	5.12	6	5.50
	9:42		Middle	3.0	26.80	26.80		8.19	8.19		32.16	32.16		76.3	76.7		5.10	5.12		5.09	5.11		5	

Remarks:
Single underline denotes exceedance over Action Level.
Double underline denotes exceedance over Limit Level.



**Water Monitoring Result at P3 - APA
Mid-Flood Tide**

Date	Time	Weather Condition	Sampling Depth		Water Temperature			pH			Salinity		DO Saturation		DO		Turbidity			Suspended Solids				
					°C			-			ppt		%		mg/L		NTU			mg/L				
					Value	Average		Value	Average		Value	Average	Value	Average	Value	Average	Value	Average	Value	Average	Value	Average		
27/6/2016	11:01	Sunny	Middle	2.5	28.80	28.80	28.55	8.63	8.63	8.64	27.08	27.08	27.08	67.4	65.9	65.4	4.51	4.41	4.38	7.00	6.46	6.58	4	4.50
	11:03		Middle	2.5	28.30	28.30		8.65	8.65		27.08	27.08		64.6	63.7		4.32	4.27		6.42	6.42		5	
30/6/2016	15:36	Fine	Middle	2.5	29.00	29.00	28.80	8.69	8.69	8.70	25.08	25.08	25.06	64.5	63.7	63.3	4.35	4.30	4.27	6.09	6.28	6.27	6	6.50
	15:38		Middle	2.5	28.60	28.60		8.71	8.71		25.04	25.04		62.8	62.1		4.24	4.18		6.42	6.30		7	
2/7/2016	17:30	Cloudy	Middle	2.5	28.30	28.30	28.30	8.67	8.67	8.68	24.24	24.24	24.19	64.0	62.2	61.5	4.35	4.25	4.21	8.63	8.55	8.56	5	5.50
	17:32		Middle	2.5	28.30	28.30		8.69	8.69		24.14	24.14		60.9	59.0		4.15	4.07		8.52	8.54		6	
4/7/2016	16:15	Fine	Middle	3.0	28.10	28.10	28.20	8.60	8.60	8.60	24.44	24.44	24.44	71.4	72.7	72.3	4.86	4.95	4.92	7.37	7.30	7.20	5	5.50
	16:17		Middle	3.0	28.30	28.30		8.59	8.59		24.43	24.43		73.0	72.2		4.96	4.91		7.08	7.04		6	
6/7/2016	20:05	Cloudy	Middle	2.0	27.70	27.70	27.70	8.49	8.49	8.49	25.30	25.30	25.30	76.4	76.6	76.6	5.22	5.23	5.23	5.93	5.82	5.81	3	3.50
	20:06		Middle	2.0	27.70	27.70		8.49	8.49		25.30	25.30		77.0	76.4		5.26	5.22		5.80	5.68		4	
8/7/2016	23:16	Fine	Middle	2.5	29.40	29.40	29.40	8.50	8.50	8.51	26.82	26.82	26.83	72.3	73.8	73.6	4.69	4.79	4.77	2.76	2.81	2.87	7	7.00
	23:17		Middle	2.5	29.40	29.40		8.51	8.51		26.83	26.83		74.4	73.8		4.82	4.78		2.90	3.02		7	
11/7/2016	22:48	Cloudy	Middle	2.0	27.30	27.30	27.35	8.50	8.50	8.51	28.04	28.04	28.47	73.4	74.3	73.5	4.97	5.02	4.97	3.22	3.01	3.03	7	7.00
	22:49		Middle	2.0	27.40	27.40		8.51	8.51		28.90	28.90		73.4	72.7		4.97	4.92		2.98	2.89		7	
14/7/2016	3:18	Cloudy	Middle	2.5	27.00	27.00	27.05	8.47	8.47	8.47	27.85	27.85	27.85	72.6	72.8	73.3	4.94	4.96	4.99	1.87	1.91	1.91	10	10.00
	3:19		Middle	2.5	27.10	27.10		8.47	8.47		27.84	27.84		73.8	73.8		5.02	5.03		1.93	1.94		10	
16/7/2016	17:51	Fine	Middle	2.5	28.70	28.70	28.70	8.41	8.41	8.41	26.70	26.70	26.72	84.3	82.5	83.3	5.71	5.59	5.64	3.29	3.44	3.40	5	4.50
	17:53		Middle	2.5	28.70	28.70		8.41	8.41		26.74	26.74		83.7	82.7		5.65	5.60		3.46	3.39		4	
18/7/2016	17:41	Fine	Middle	2.5	27.80	27.80	27.80	8.51	8.51	8.52	27.42	27.42	27.40	83.7	81.6	83.2	5.64	5.50	5.61	5.34	5.53	5.43	10	9.50
	17:43		Middle	2.5	27.80	27.80		8.53	8.53		27.38	27.38		83.4	83.9		5.62	5.66		5.47	5.39		9	
20/7/2016	17:03	Cloudy	Middle	2.5	28.00	28.00	28.05	8.52	8.52	8.53	27.43	27.43	27.43	88.4	89.7	87.3	5.93	6.02	5.86	2.97	2.99	2.95	3	3.50
	17:05		Middle	2.5	28.10	28.10		8.53	8.53		27.43	27.43		87.6	83.5		5.89	5.60		2.94	2.90		4	
22/7/2016	22:02	Fine	Middle	3.0	28.60	28.60	28.60	7.88	7.88	7.88	30.74	30.74	30.74	71.6	72.3	71.5	4.68	4.72	4.67	3.39	3.41	3.46	5	4.50
	22:03		Middle	3.0	28.60	28.60		7.87	7.87		30.74	30.74		71.8	70.4		4.69	4.60		3.53	3.50		4	
25/7/2016	9:45	Fine	Middle	3.0	25.90	25.90	26.00	8.20	8.20	8.20	31.94	31.94	31.94	66.5	66.4	66.6	4.51	4.50	4.52	4.58	4.49	4.47	6	6.00
	9:47		Middle	3.0	26.10	26.10		8.20	8.20		31.94	31.94		66.7	66.8		4.52	4.53		4.46	4.34		6	

Remarks:
 Single underline denotes exceedance over Action Level.
 Double underline denotes exceedance over Limit Level.



**Water Monitoring Result at P4 - SOC
Mid-Flood Tide**

Date	Time	Weather Condition	Sampling Depth		Water Temperature			pH			Salinity			DO Saturation			DO			Turbidity			Suspended Solids	
					°C			-			ppt			%			mg/L			NTU			mg/L	
			m	Value	Average	Value	Average	Value	Average	Value	Average	Value	Average	Value	Average	Value	Average	Value	Average	Value	Average	Value	Average	Value
27/6/2016	11:05	Sunny	Middle	2.5	28.10	28.10	28.10	8.66	8.66	8.67	29.96	26.96	27.71	70.1	68.3	67.8	4.71	4.59	4.55	7.24	7.22	7.13	3	4.00
	11:07		Middle	2.5	28.10	28.10		8.68	8.68		26.96	26.96		67.0	65.6		4.50	4.41		7.07	7.00		5	
30/6/2016	15:40	Fine	Middle	2.5	28.50	28.50	28.50	8.73	8.73	8.75	24.92	24.92	24.97	68.6	67.7	67.3	4.64	4.58	4.58	7.15	7.18	7.10	7	7.00
	15:42		Middle	2.5	28.50	28.50		8.77	8.77		25.01	25.01		67.3	65.7		4.65	4.44		7.01	7.06		7	
2/7/2016	17:34	Cloudy	Middle	2.5	28.00	28.00	28.00	8.70	8.70	8.60	24.30	24.30	24.31	62.7	62.3	62.4	4.29	4.26	4.26	9.79	9.72	9.82	8	8.50
	17:36		Middle	2.5	28.00	28.00		8.24	8.74		24.32	24.32		63.0	61.7		4.25	4.22		9.87	9.90		9	
4/7/2016	16:20	Fine	Middle	3.0	27.80	27.80	27.90	8.59	8.59	8.59	24.73	24.73	24.73	69.2	69.9	70.0	4.73	4.78	4.78	8.54	8.55	8.59	4	5.00
	16:22		Middle	3.0	28.00	28.00		8.58	8.58		24.73	24.73		70.0	70.7		4.78	4.83		8.59	8.68		6	
6/7/2016	20:10	Cloudy	Middle	2.0	27.70	27.70	27.75	8.52	8.52	8.52	25.28	25.28	25.28	70.8	71.7	72.1	4.80	4.89	4.91	5.21	5.19	5.14	8	7.50
	20:11		Middle	2.0	27.80	27.80		8.52	8.52		25.28	25.28		73.0	72.7		4.98	4.97		5.04	5.10		7	
8/7/2016	23:24	Fine	Middle	5.0	30.20	30.10	30.13	8.52	8.52	8.53	27.20	27.20	27.20	72.5	73.2	73.6	4.63	4.68	4.71	3.77	3.79	3.81	10	10.00
	23:25		Middle	2.5	30.10	30.10		8.53	8.53		27.20	27.20		74.5	74.1		4.77	4.74		3.81	3.85		10	
11/7/2016	22:54	Cloudy	Middle	2.0	27.30	27.30	27.35	8.48	8.48	8.48	27.78	27.78	27.78	73.5	74.9	73.8	4.98	5.07	5.00	3.94	3.55	3.57	7	6.50
	22:55		Middle	2.0	27.40	27.40		8.47	8.48		27.78	27.78		73.5	73.2		4.98	4.95		3.37	3.40		6	
14/7/2016	3:24	Cloudy	Middle	2.5	27.10	27.10	27.15	8.48	8.48	8.48	27.72	27.72	27.72	70.5	70.8	71.0	4.79	4.82	4.83	2.28	2.20	2.19	4	4.50
	3:25		Middle	2.5	27.20	27.20		8.48	8.48		27.71	27.71		71.9	70.8		4.89	4.81		2.11	2.16		5	
16/7/2016	17:55	Fine	Middle	2.5	27.60	27.60	27.60	8.43	8.43	8.45	26.81	26.81	26.57	94.8	95.0	94.9	6.45	6.46	6.46	3.34	3.35	3.39	6	5.00
	17:57		Middle	2.5	27.60	27.60		8.46	8.46		26.32	26.32		95.1	94.8		6.47	6.45		3.29	3.56		4	
18/7/2016	17:45	Fine	Middle	2.5	27.60	27.60	27.50	8.55	8.55	8.56	27.50	27.50	27.46	92.9	93.7	93.4	6.31	6.36	6.34	4.34	4.46	4.57	11	10.50
	17:47		Middle	2.5	27.40	27.40		8.57	8.57		27.41	27.41		94.0	93.0		6.38	6.32		4.69	4.78		10	
20/7/2016	17:07	Cloudy	Middle	2.5	27.80	27.80	27.85	8.51	8.51	8.50	27.73	27.73	27.73	75.7	75.0	74.2	5.20	5.04	5.02	3.98	4.11	4.04	6	6.00
	17:09		Middle	2.5	27.90	27.90		8.49	8.49		27.72	27.72		73.8	72.2		4.95	4.88		4.04	4.01		6	
22/7/2016	22:10	Fine	Middle	3.0	28.30	28.30	28.30	7.89	7.89	7.90	31.35	31.35	31.35	79.7	79.9	79.4	5.21	5.23	5.19	5.76	5.65	5.63	7	7.00
	22:11		Middle	3.0	28.30	28.30		7.91	7.91		31.35	31.35		78.9	79.1		5.16	5.17		5.56	5.54		7	
25/7/2016	9:50	Fine	Middle	3.0	25.80	25.80	25.85	8.21	8.21	8.21	32.04	32.04	32.04	75.4	75.2	75.6	5.12	5.11	5.14	4.56	4.57	4.67	9	8.50
	9:52		Middle	3.0	25.90	25.90		8.21	8.21		32.04	32.04		75.6	76.3		5.13	5.18		4.78	4.78		8	

Remarks:
Single underline denotes exceedance over Action Level.
Double underline denotes exceedance over Limit Level.



**Water Monitoring Result at P5 - WCT / RT / IT
Mid-Flood Tide**

Date	Time	Weather Condition	Sampling Depth		Water Temperature			pH			Salinity		DO Saturation		DO		Turbidity		Suspended Solids					
					°C		-		ppt		%		mg/L		NTU		mg/L							
			m	Value	Average	Value	Average	Value	Average	Value	Average	Value	Average	Value	Average	Value	Average	Value	Average					
27/6/2016	11:09	Sunny	Middle	2.5	28.10	28.10	28.05	8.68	8.68	8.68	26.91	26.91	27.12	68.1	66.3	65.6	4.58	4.46	4.41	6.75	6.54	6.52	4	4.00
	11:11		Middle	2.5	28.00	28.00		8.68	8.68		27.32	27.32		65.0	63.0		4.37	4.23		6.46	6.34		4	
30/6/2016	15:44	Fine	Middle	2.5	28.30	28.30	28.35	8.79	8.79	8.80	24.97	24.97	24.97	68.4	67.0	66.4	4.63	4.54	4.50	7.14	7.18	7.08	7	7.00
	15:46		Middle	2.5	28.40	28.40		8.81	8.81		24.97	24.97		65.4	64.9		4.43	4.39		7.07	6.94		7	
2/7/2016	17:38	Cloudy	Middle	2.5	28.00	28.00	27.95	8.73	8.73	8.74	24.09	24.09	24.18	67.9	66.7	66.0	4.65	4.57	4.52	9.13	9.24	9.16	9	9.00
	17:40		Middle	2.5	27.90	27.90		8.75	8.75		24.27	24.27		65.5	63.8		4.48	4.37		9.13	9.13		9	
4/7/2016	16:25	Fine	Middle	3.0	27.80	27.80	27.85	8.59	8.59	8.60	24.29	24.29	24.29	69.2	69.9	70.8	4.73	4.78	4.85	8.54	8.55	8.61	5	4.50
	16:27		Middle	3.0	27.90	27.90		8.60	8.60		24.28	24.28		72.0	71.9		4.94	4.93		8.69	8.67		4	
6/7/2016	20:15	Cloudy	Middle	2.0	27.70	27.70	27.70	8.40	8.40	8.41	25.11	25.11	25.12	73.4	74.0	74.0	5.02	5.07	5.06	6.06	6.00	5.98	10	10.00
	20:16		Middle	2.0	27.70	27.70		8.41	8.41		25.13	25.13		74.2	74.4		5.07	5.09		5.98	5.86		10	
8/7/2016	23:30	Fine	Middle	2.5	29.50	29.50	29.50	8.56	8.56	8.56	27.27	27.27	27.27	73.0	73.4	73.3	4.78	4.80	4.79	3.54	3.49	3.47	8	8.00
	23:31		Middle	2.5	29.50	29.50		8.56	8.56		27.27	27.27		73.2	73.4		4.79	4.80		3.43	3.40		8	
11/7/2016	23:06	Cloudy	Middle	2.0	27.40	27.40	27.45	8.51	8.51	8.51	27.67	27.67	27.68	75.0	74.5	74.4	5.07	5.04	5.03	3.43	3.05	3.11	11	10.50
	23:07		Middle	2.0	27.50	27.50		8.50	8.51		27.68	27.68		73.9	74.0		5.00	5.01		2.97	2.98		10	
14/7/2016	3:32	Cloudy	Middle	2.5	26.90	26.90	26.95	8.48	8.48	8.49	27.81	27.81	27.81	74.4	76.5	75.7	5.07	5.21	5.15	1.77	1.92	1.87	4	4.00
	3:33		Middle	2.5	27.00	27.00		8.49	8.49		27.80	27.80		76.0	75.7		5.17	5.14		1.96	1.83		4	
16/7/2016	17:59	Fine	Middle	2.5	27.70	27.70	27.70	8.47	8.47	8.49	26.25	26.25	26.33	92.3	89.1	88.6	6.27	6.06	6.03	4.58	4.19	4.48	4	4.50
	18:01		Middle	2.5	27.70	27.70		8.50	8.50		26.41	26.41		87.6	85.4		5.96	5.81		4.58	4.58		5	
18/7/2016	17:49	Fine	Middle	2.5	27.30	27.30	27.55	8.53	8.53	8.56	27.35	27.35	27.35	90.2	87.8	87.0	6.14	5.97	5.92	5.23	5.17	5.09	10	10.00
	17:51		Middle	2.5	27.80	27.80		8.58	8.58		27.35	27.35		85.5	84.6		5.81	5.76		5.04	4.92		10	
20/7/2016	17:11	Cloudy	Middle	2.5	27.60	27.60	27.60	8.47	8.47	8.47	27.78	27.78	27.78	84.9	83.6	82.3	5.70	5.64	5.55	3.80	3.55	3.47	6	5.00
	17:13		Middle	2.5	27.60	27.60		8.46	8.46		27.78	27.78		81.6	79.2		5.52	5.34		3.45	3.07		4	
22/7/2016	22:17	Fine	Middle	3.0	28.20	28.20	28.15	7.95	7.95	7.96	30.97	30.97	30.97	78.9	77.9	78.6	5.17	5.10	5.15	4.61	4.65	4.67	6	5.50
	22:18		Middle	3.0	28.10	28.10		7.97	7.97		30.97	30.97		78.4	79.3		5.14	5.19		4.67	4.75		5	
25/7/2016	9:55	Fine	Middle	3.0	25.60	25.60	25.65	8.22	8.22	8.22	31.88	31.88	31.88	77.2	76.5	76.9	5.26	5.22	5.25	5.18	5.03	5.03	8	8.00
	9:57		Middle	3.0	25.70	25.70		8.22	8.22		31.88	31.88		76.3	77.7		5.20	5.30		5.00	4.92		8	

Remarks:
 Single underline denotes exceedance over Action Level.
 Double underline denotes exceedance over Limit Level.



**Water Monitoring Result at RW21-P789 - Sun Hung Kai Centre
Mid-Flood Tide**

Date	Time	Weater Condition	Sampling Depth		Water Temperature			pH			Salinity			DO Saturation		DO		Turbidity			Suspended Solids			
					°C			-			ppt			%		mg/L		NTU			mg/L			
					Value	Average		Value	Average		Value	Average		Value	Average	Value	Average	Value	Average	Value	Average	Value	Average	
27/6/2016	11:25	Sunny	Middle	3.5	27.40	27.40	27.45	8.63	8.63	8.65	27.64	27.64	27.64	78.3	78.7	77.7	5.31	5.33	5.26	5.62	5.73	5.78	5	5.50
	11:27		Middle	3.5	27.50	27.50		8.66	8.66		27.64	27.64		77.3	76.4		5.24	5.17		5.89	5.89		6	
30/6/2016	16:00	Fine	Middle	3.5	28.30	28.30	28.35	8.64	8.64	8.68	25.14	25.14	25.13	71.6	68.7	68.0	4.84	4.64	4.60	5.63	5.64	5.64	5	6.00
	16:02		Middle	3.5	28.40	28.40		8.72	8.72		25.12	25.12		66.1	65.7		4.46	4.44		5.65	5.64		7	
2/7/2016	15:23	Cloudy	Middle	3.5	28.60	28.60	28.90	8.56	8.56	8.61	23.68	23.68	23.58	70.1	68.4	67.4	4.75	4.63	4.56	9.98	9.99	9.92	6	6.00
	15:25		Middle	3.5	29.20	29.20		8.65	8.65		23.48	23.48		66.1	65.0		4.47	4.39		9.86	9.84		6	
4/7/2016	18:00	Fine	Middle	3.0	28.30	28.30	28.35	8.53	8.53	8.54	24.84	24.84	24.85	74.9	75.3	74.9	5.08	5.10	5.08	4.82	4.49	4.65	5	5.00
	18:01		Middle	3.0	28.40	28.40		8.56	8.55		24.85	24.85		74.9	74.4		5.08	5.04		4.57	4.70		5	
6/7/2016	18:11	Cloudy	Middle	3.0	27.70	27.70	27.70	8.50	8.50	8.50	24.18	24.18	24.18	79.6	79.9	79.9	5.48	5.51	5.50	3.68	3.50	3.53	6	6.50
	18:12		Middle	3.0	27.70	27.70		8.50	8.50		24.18	24.18		80.0	80.2		5.50	5.50		3.47	3.45		7	
8/7/2016	21:45	Fine	Middle	3.0	29.50	29.50	29.50	8.44	8.44	8.45	26.74	26.74	26.74	71.5	72.7	72.6	4.70	4.78	4.77	3.50	3.58	3.56	8	8.00
	21:46		Middle	3.0	29.50	29.50		8.45	8.45		26.73	26.73		73.5	72.5		4.83	4.76		3.61	3.54		8	
11/7/2016	21:10	Cloudy	Middle	3.0	27.30	27.30	27.30	8.45	8.45	8.45	28.23	28.23	28.24	70.9	71.5	71.6	4.79	4.83	4.84	2.84	2.94	2.84	7	7.00
	21:11		Middle	3.0	27.30	27.30		8.45	8.45		28.24	28.24		72.2	71.9		4.88	4.86		2.92	2.66		7	
14/7/2016	2:40	Cloudy	Middle	3.5	27.10	27.10	27.15	8.37	8.37	8.37	27.72	27.72	27.73	66.4	66.6	66.5	4.51	4.53	4.52	2.40	2.25	2.21	6	6.00
	2:41		Middle	3.5	27.20	27.20		8.37	8.37		27.73	27.73		66.6	66.3		4.53	4.50		2.06	2.11		6	
16/7/2016	15:45	Fine	Middle	3.5	27.80	27.80	27.90	8.34	8.34	8.39	26.04	26.04	26.04	100.9	101.1	101.0	6.84	6.88	6.86	4.44	4.50	4.39	7	7.00
	15:47		Middle	3.5	28.00	28.00		8.44	8.44		26.04	26.04		101.3	100.8		6.89	6.83		4.34	4.28		7	
18/7/2016	18:06	Fine	Middle	3.5	27.30	27.30	27.30	8.51	8.51	8.52	27.32	27.32	27.31	82.4	81.8	81.5	5.61	5.56	5.54	4.79	4.73	4.76	7	7.50
	18:08		Middle	3.5	27.30	27.30		8.52	8.52		27.30	27.30		81.0	80.8		5.51	5.49		4.75	4.75		8	
20/7/2016	17:20	Cloudy	Middle	3.0	27.90	27.90	27.90	7.90	7.90	7.91	27.78	27.78	27.78	88.6	89.3	88.7	5.94	5.95	5.93	3.93	3.91	3.98	6	5.50
	17:21		Middle	3.0	27.90	27.90		7.91	7.91		27.77	27.77		87.9	89.0		5.88	5.95		4.06	4.01		5	
22/7/2016	22:35	Fine	Middle	3.5	27.40	27.40	27.40	7.74	7.74	7.74	31.01	31.01	31.01	70.9	72.5	72.2	4.64	4.70	4.71	9.63	9.57	9.54	5	5.00
	22:36		Middle	3.5	27.40	27.40		7.74	7.74		31.01	31.01		72.4	72.8		4.72	4.76		9.52	9.44		5	
25/7/2016	10:15	Fine	Middle	3.5	25.50	25.50	25.60	8.23	8.23	8.24	31.39	31.39	31.39	83.3	83.2	82.6	5.70	5.69	5.65	4.70	4.59	4.60	8	7.00
	10:17		Middle	3.5	25.70	25.70		8.24	8.24		31.38	31.38		81.3	82.7		5.56	5.65		4.51	4.58		6	

Remarks:
Single underline denotes exceedance over Action Level.
Double underline denotes exceedance over Limit Level.



**Water Monitoring Result at WSD19 - Sheung Wan
Mid-Flood Tide**

Date	Time	Weater Condition	Sampling Depth		Water Temperature			pH			Salinity			DO Saturation		DO		Turbidity		Suspended Solids				
					°C		-		ppt		%		mg/L		NTU		mg/L							
			m	Value	Average	Value	Average	Value	Average	Value	Average	Value	Average	Value	Average	Value	Average	Value	Average	Value	Average			
27/6/2016	10:14	Sunny	Middle	3.5	28.40	28.40	28.50	8.53	8.53	8.55	26.70	26.70	26.68	65.3	65.8	65.9	4.37	4.40	4.41	8.42	8.40	8.34	6	5.00
	10:16		Middle	3.5	28.60	28.60		8.57	8.57		26.65	26.65		67.1	65.4		4.48	4.37		8.32	8.22		4	
30/6/2016	14:45	Fine	Middle	3.5	28.70	28.70	28.80	8.64	8.64	8.66	24.48	24.47	24.46	61.3	60.8	60.9	4.13	4.10	4.10	8.06	8.06	8.05	8	7.50
	14:47		Middle	3.5	28.90	28.90		8.68	8.68		24.45	24.45		60.5	60.8		4.08	4.10		8.05	8.04		7	
2/7/2016	16:38	Cloudy	Middle	3.5	27.50	27.50	27.50	8.50	8.50	8.54	24.52	24.52	24.52	55.3	55.4	55.0	3.81	3.81	3.79	9.39	9.36	9.38	5	5.50
	16:40		Middle	3.5	27.50	27.50		8.57	8.57		24.52	24.52		54.9	54.4		3.78	3.75		9.38	9.38		6	
4/7/2016	19:10	Fine	Middle	3.0	27.60	27.60	27.75	8.52	8.52	8.52	25.16	25.16	25.16	70.5	70.2	70.1	4.81	4.79	4.78	4.18	4.22	4.28	8	8.50
	19:11		Middle	3.0	27.90	27.90		8.51	8.51		25.15	25.15		69.9	69.9		4.76	4.77		4.40	4.30		9	
6/7/2016	18:55	Cloudy	Middle	3.0	27.10	27.10	27.15	8.47	8.47	8.48	24.47	24.47	24.48	73.4	73.2	73.1	5.09	5.07	5.07	2.81	2.84	2.95	5	5.50
	18:56		Middle	3.0	27.20	27.20		8.48	8.48		24.48	24.48		73.1	72.8		5.06	5.04		3.11	3.03		6	
8/7/2016	22:22	Fine	Middle	3.0	29.80	29.80	29.80	8.39	8.39	8.39	27.04	27.04	27.04	71.1	71.3	71.2	4.64	4.65	4.65	4.97	4.99	4.87	5	5.50
	22:23		Middle	3.0	29.80	29.80		8.39	8.40		27.04	27.04		71.3	71.0		4.65	4.64		4.70	4.80		6	
11/7/2016	22:00	Cloudy	Middle	3.0	27.30	27.30	27.35	8.41	8.41	8.42	28.05	28.05	28.05	75.4	75.9	75.4	5.09	5.13	5.09	3.50	3.45	3.42	7	7.00
	22:01		Middle	3.0	27.40	27.40		8.43	8.43		28.05	28.05		75.5	74.6		5.10	5.04		3.37	3.35		7	
14/7/2016	3:57	Cloudy	Middle	3.5	27.00	27.00	27.05	8.38	8.38	8.39	27.09	27.09	27.10	72.1	72.6	72.9	4.93	4.96	4.98	1.69	1.66	1.65	5	4.50
	3:58		Middle	3.5	27.10	27.10		8.41	8.39		27.10	27.10		73.3	73.6		5.01	5.03		1.64	1.62		4	
16/7/2016	16:41	Fine	Middle	3.5	28.50	28.50	28.65	8.36	8.36	8.45	25.48	25.48	25.49	86.0	84.6	85.9	5.77	5.67	5.64	3.97	3.98	4.04	9	8.00
	16:43		Middle	3.5	28.80	28.80		8.53	8.53		25.49	25.49		86.5	86.4		5.81	5.29		4.09	4.11		7	
18/7/2016	16:52	Fine	Middle	3.5	28.20	28.20	28.05	8.32	8.32	8.37	26.81	26.81	26.82	80.0	78.2	78.1	5.41	5.29	5.29	4.25	4.29	4.29	10	10.00
	16:54		Middle	3.5	27.90	27.90		8.42	8.42		26.83	26.83		77.3	76.9		5.24	5.21		4.25	4.38		10	
20/7/2016	19:32	Cloudy	Middle	3.0	27.20	27.20	27.25	7.84	7.84	7.84	28.95	28.95	28.95	79.9	81.1	80.4	5.38	5.47	5.42	5.65	5.86	5.81	5	4.50
	19:35		Middle	3.0	27.30	27.30		7.84	7.84		28.94	28.94		80.6	80.0		5.42	5.40		5.99	5.74		4	
22/7/2016	21:15	Fine	Middle	3.5	27.40	27.40	27.40	7.88	7.88	7.88	30.84	30.84	30.84	74.4	74.3	74.0	4.87	4.87	4.85	5.53	5.15	5.17	5	5.50
	21:16		Middle	3.5	27.40	27.40		7.88	7.88		30.84	30.84		74.0	73.4		4.83	4.82		4.98	5.02		6	
25/7/2016	8:48	Fine	Middle	3.5	25.70	25.70	25.85	8.48	8.48	8.40	31.74	31.74	31.64	64.8	65.7	65.3	4.41	4.47	4.45	9.85	9.95	9.95	12	11.50
	8:50		Middle	3.5	26.00	26.00		8.32	8.32		31.54	31.54		65.5	65.2		4.46	4.44		10.01	10.00		11	

Remarks:
Single underline denotes exceedance over Action Level.
Double underline denotes exceedance over Limit Level.



**Water Monitoring Result at C7 - Windsor House
Mid-Ebb Tide**

Date	Time	Weather Condition	Sampling Depth		Water Temperature		pH			Salinity		DO Saturation		DO		Turbidity		Suspended Solids						
					°C		-		ppt		%		mg/L		NTU		mg/L							
					Value	Average	Value	Average	Value	Average	Value	Average	Value	Average	Value	Average	Value	Average						
27/6/2016	17:56	Sunny	Middle	-	28.60	28.60	28.60	8.62	8.62	8.66	26.53	26.53	26.29	68.8	68.0	69.0	4.60	4.55	4.61	6.91	6.94	6.91	4	4.00
	17:58		Middle	-	28.60	28.60		8.70	8.70		26.54	25.54		69.3	69.9		4.63	4.67		6.91	6.87		4	
30/6/2016	11:41	Fine	Middle	-	28.90	28.90	28.90	8.65	8.65	8.66	24.28	24.28	24.29	62.9	61.7	61.7	4.24	4.16	4.16	7.25	7.23	7.33	5	5.00
	11:43		Middle	-	28.90	28.90		8.66	8.66		24.29	24.29		61.3	60.7		4.13	4.09		7.42	7.43		5	
2/7/2016	11:47	Cloudy	Middle	-	28.70	28.70	28.70	8.56	8.56	8.60	23.98	23.98	23.99	56.5	55.7	55.5	3.83	3.77	3.76	34.12	34.12	<u>34.62</u>	4	4.00
	11:49		Middle	-	28.70	28.70		8.63	8.63		24.00	24.00		55.1	54.8		3.73	3.71		35.19	35.06		4	
4/7/2016	14:30	Fine	Middle	-	28.90	28.90	29.05	8.32	8.32	8.36	24.54	24.54	24.53	67.4	67.5	67.2	4.53	4.53	4.51	6.54	6.53	6.52	3	3.50
	14:32		Middle	-	29.20	29.20		8.39	8.39		24.52	24.52		67.0	67.0		4.49	4.49		6.52	6.48		4	
6/7/2016	-	Amber Rainstorm Warning Signal	Middle	-	-	-	#DIV/0!	-	-	#DIV/0!	-	-	#DIV/0!	-	-	#DIV/0!	-	-	#DIV/0!	-	-	#DIV/0!	-	#DIV/0!
	-		Middle	-	-	-		-	-		-	-		-	-		-	-		-	-		-	
8/7/2016	16:00	Fine	Middle	-	28.70	28.70	28.95	8.12	8.12	8.15	26.13	26.13	26.13	94.6	95.2	94.5	6.30	6.35	6.30	1.96	1.95	1.93	6	5.50
	16:02		Middle	-	29.20	29.20		8.18	8.18		26.13	26.13		94.2	94.1		6.28	6.27		1.90	1.90		5	
11/7/2016	14:50	Fine	Middle	-	28.10	28.10	28.35	8.09	8.09	8.10	28.17	28.17	28.14	84.5	85.1	84.7	5.61	5.65	5.62	4.69	4.50	4.56	11	11.50
	14:52		Middle	-	28.60	28.60		8.10	8.10		28.10	28.10		84.8	84.3		5.63	5.59		4.48	4.57		12	
14/7/2016	10:00	Cloudy	Middle	-	26.90	26.90	26.95	8.07	8.07	8.10	25.69	25.69	25.69	76.8	76.0	75.9	5.31	5.25	5.25	2.37	2.36	2.36	5	4.50
	10:02		Middle	-	27.00	27.00		8.12	8.12		25.69	25.69		76.0	74.9		5.25	5.17		2.35	2.35		4	
16/7/2016	11:50	Fine	Middle	-	28.40	27.40	28.20	8.11	8.11	8.21	25.29	25.29	25.29	94.9	96.4	95.1	6.40	6.50	6.41	2.76	2.77	2.73	5	5.50
	11:52		Middle	-	28.50	28.50		8.31	8.31		25.28	25.28		94.1	95.1		6.34	6.41		2.71	2.67		6	
18/7/2016	10:47	Fine	Middle	-	28.00	28.00	28.05	8.29	8.29	8.29	27.06	27.06	27.06	81.2	82.3	81.8	5.47	5.53	5.50	3.32	3.24	3.26	6	5.50
	10:49		Middle	-	28.10	28.10		8.29	8.29		27.05	27.05		82.0	81.5		5.51	5.48		3.24	3.24		5	
20/7/2016	14:20	Fine	Middle	-	28.80	28.80	28.85	8.17	8.17	8.18	28.47	28.47	28.37	74.0	72.4	70.5	4.89	4.78	4.66	3.89	3.81	3.82	5	5.50
	14:22		Middle	-	28.90	28.90		8.18	8.18		28.26	28.26		69.1	66.6		4.56	4.40		3.59	3.99		6	
22/7/2016	15:12	Fine	Middle	-	26.80	26.80	26.90	8.10	8.10	8.10	30.08	30.08	30.08	65.7	65.5	64.6	4.43	4.42	4.35	2.56	2.55	2.58	2	2.00
	15:14		Middle	-	27.00	27.00		8.10	8.10		30.08	30.08		64.5	62.5		4.34	4.21		2.63	2.56		2	
25/7/2016	17:02	Sunny	Middle	-	26.70	26.70	26.80	8.08	8.08	8.09	31.22	31.22	31.21	58.7	58.8	59.2	3.94	3.95	3.97	12.26	12.25	<u>12.08</u>	6	5.50
	17:06		Middle	-	26.90	26.90		8.09	8.09		31.20	31.20		60.0	59.3		4.01	3.98		11.94	11.87		5	

Remarks:
Single underline denotes exceedance over Action Level.
Double underline denotes exceedance over Limit Level.



**Water Monitoring Result at C1 - HKCEC
Mid-Ebb Tide**

Date	Time	Weather Condition	Sampling Depth		Water Temperature		pH			Salinity		DO Saturation		DO		Turbidity		Suspended Solids						
			m		°C		-		ppt		%		mg/L		NTU		mg/L							
					Value	Average	Value	Average	Value	Average	Value	Average	Value	Average	Value	Average	Value	Average						
27/6/2016	17:20	Sunny	Middle	3.0	28.60	28.60	28.65	8.62	8.62	8.79	24.92	24.92	24.92	93.1	93.2	92.9	6.28	6.28	6.26	6.01	6.16	6.05	9	8.50
	17:22		Middle	3.0	28.70	28.70		8.96	8.96		24.92	24.92		93.2	91.9		6.28	6.19		6.02	6.01		8	
30/6/2016	10:48	Fine	Middle	2.5	28.50	28.50	28.50	8.86	8.86	8.87	22.91	22.91	22.92	72.5	71.9	71.6	4.96	4.91	4.89	6.89	6.92	6.95	4	4.50
	10:50		Middle	2.5	28.50	28.50		8.87	8.87		22.92	22.92		71.7	70.1		4.90	4.79		7.00	6.99		5	
2/7/2016	11:06	Cloudy	Middle	2.5	28.60	28.60	28.55	8.78	8.78	8.79	22.63	22.63	22.64	69.1	68.0	67.3	4.75	4.64	4.61	7.26	7.23	7.24	5	5.00
	11:08		Middle	2.5	28.50	28.50		8.79	8.79		22.65	22.65		66.3	65.7		4.53	4.50		7.20	7.27		5	
4/7/2016	11:10	Fine	Middle	3.5	27.40	27.40	27.45	8.56	8.56	8.57	24.23	24.23	24.23	70.2	70.1	70.1	4.85	4.82	4.84	6.47	6.50	6.56	4	4.00
	11:12		Middle	3.5	27.50	27.50		8.57	8.57		24.23	24.23		69.9	70.2		4.82	4.85		6.61	6.65		4	
6/7/2016	-	Amber Rainstorm Warning Signal	Middle	-	-	-	#DIV/0!	-	-	#DIV/0!	-	-	#DIV/0!	-	-	#DIV/0!	-	-	#DIV/0!	-	-	#DIV/0!	-	#DIV/0!
	-		Middle	-	-	-	#DIV/0!	-	-	#DIV/0!	-	-	#DIV/0!	-	-	#DIV/0!	-	-	#DIV/0!	-	-	#DIV/0!	-	#DIV/0!
8/7/2016	15:19	Fine	Middle	2.5	28.10	28.10	28.10	8.42	8.42	8.42	25.71	25.71	25.79	91.8	95.2	94.1	6.21	6.45	6.37	2.49	2.46	2.44	6	5.50
	15:21		Middle	2.5	28.10	28.10		8.42	8.42		25.87	25.87		95.2	94.1		6.44	6.37		2.44	2.36		5	
11/7/2016	17:21	Fine	Middle	2.5	26.90	26.90	26.90	8.39	8.39	8.39	27.73	27.73	27.73	99.2	99.2	99.0	6.78	6.78	6.77	1.54	1.50	1.53	5	5.00
	17:23		Middle	2.5	26.90	26.90		8.38	8.38		27.73	27.73		99.1	98.4		6.77	6.73		1.51	1.56		5	
14/7/2016	9:16	Cloudy	Middle	2.5	26.90	26.90	26.90	8.43	8.43	8.43	24.66	24.66	24.70	81.8	80.4	79.5	5.68	5.59	5.53	2.43	2.35	2.36	5	5.50
	9:18		Middle	2.5	26.90	26.90		8.42	8.42		24.74	24.74		78.8	77.0		5.48	5.35		2.34	2.30		6	
16/7/2016	11:15	Fine	Middle	2.5	27.80	27.80	27.80	8.61	8.61	8.61	24.61	24.61	24.62	97.7	99.7	99.0	6.68	6.83	6.78	3.24	3.28	3.35	5	4.50
	11:17		Middle	2.5	27.80	27.80		8.60	8.60		24.62	24.62		99.5	99.0		6.81	6.78		3.35	3.51		4	
18/7/2016	14:45	Fine	Middle	2.5	28.30	28.30	28.35	8.76	8.76	8.77	25.00	25.00	25.06	105.7	104.5	103.4	7.11	7.08	6.99	4.88	4.90	4.79	9	8.50
	14:47		Middle	2.5	28.40	28.40		8.77	8.77		25.02	25.20		102.7	100.7		6.96	6.82		4.72	4.64		8	
20/7/2016	10:57	Fine	Middle	2.5	26.90	26.90	26.90	8.44	8.44	8.44	27.99	27.99	27.98	80.9	80.3	80.8	5.52	5.48	5.51	4.01	3.84	3.87	4	4.50
	10:59		Middle	2.5	26.90	26.90		8.44	8.44		27.97	27.97		81.2	80.8		5.54	5.51		3.82	3.79		5	
22/7/2016	14:20	Fine	Middle	3.0	26.60	26.60	26.65	8.33	8.33	8.33	29.76	29.76	29.76	89.0	89.1	88.9	6.05	6.05	6.04	3.08	3.00	3.04	5	5.00
	14:22		Middle	3.0	26.70	26.70		8.33	8.33		29.75	29.75		88.3	89.1		5.99	6.05		2.99	3.07		5	
25/7/2016	16:11	Sunny	Middle	2.5	26.80	26.80	26.80	8.40	8.40	8.40	31.19	31.19	31.19	84.8	80.8	81.6	5.69	5.43	5.48	4.44	4.45	4.31	6	7.00
	16:13		Middle	2.5	26.80	26.80		8.40	8.40		31.18	31.18		80.1	80.8		5.38	5.40		4.23	4.11		8	

Remarks:
Single underline denotes exceedance over Action Level.
Double underline denotes exceedance over Limit Level.



**Water Monitoring Result at P1 - HKCEC Phase I
Mid-Ebb Tide**

Date	Time	Weather Condition	Sampling Depth		Water Temperature		pH			Salinity		DO Saturation		DO		Turbidity		Suspended Solids						
					°C		-		ppt		%		mg/L		NTU		mg/L							
			m	Value	Average	Value	Average	Value	Average	Value	Average	Value	Average	Value	Average	Value	Average	Value	Average					
27/6/2016	17:00	Sunny	Middle	3.0	29.90	29.90	30.00	8.78	8.78	8.86	24.29	24.29	24.29	96.6	98.0	89.2	6.39	6.48	6.40	6.96	6.94	6.99	8	8.50
	17:02		Middle	3.0	30.10	30.10		8.93	8.93		24.29	24.29		65.8	96.4		6.34	6.38		6.99	7.06		9	
30/6/2016	10:32	Fine	Middle	2.5	29.10	29.10	29.20	8.67	8.67	8.71	22.79	22.79	22.78	72.1	71.6	71.0	4.87	4.84	4.80	7.01	6.94	6.96	6	6.50
	10:34		Middle	2.5	29.30	29.30		8.75	8.75		22.76	22.76		70.9	69.3		4.79	4.68		6.92	6.96		7	
2/7/2016	10:50	Cloudy	Middle	2.5	29.30	29.30	29.35	8.65	8.65	8.67	23.04	23.04	23.04	68.0	67.3	66.5	4.58	4.53	4.52	7.02	7.05	7.08	5	5.00
	10:52		Middle	2.5	29.40	29.40		8.69	8.69		23.04	23.04		65.7	65.1		4.41	4.57		7.10	7.13		5	
4/7/2016	10:50	Fine	Middle	3.5	28.30	28.30	28.40	8.48	8.48	8.50	24.12	24.12	24.12	76.7	72.4	72.7	4.88	4.42	4.73	7.53	7.72	7.69	4	4.50
	10:52		Middle	3.5	28.50	28.50		8.51	8.51		24.11	24.11		71.1	70.7		4.83	4.80		7.74	7.75		5	
6/7/2016	-	Amber Rainstorm Warning Signal	Middle	-	-	-	#DIV/0!	-	-	#DIV/0!	-	-	#DIV/0!	-	-	#DIV/0!	-	-	#DIV/0!	-	-	#DIV/0!	-	#DIV/0!
	-		Middle	-	-	-		-	-		-	-		-	-		-	-		-	-		-	
8/7/2016	15:03	Fine	Middle	2.5	29.50	29.50	29.50	8.30	8.30	8.33	25.89	25.89	25.88	81.6	82.6	82.9	5.34	5.46	5.47	2.36	2.41	2.35	5	5.00
	15:05		Middle	2.5	29.50	29.50		8.35	8.35		25.86	25.89		82.8	84.5		5.48	5.59		2.35	2.26		5	
11/7/2016	17:05	Fine	Middle	2.5	28.10	28.10	28.25	8.33	8.33	8.35	27.60	27.60	27.56	82.8	88.8	87.1	5.87	5.94	5.91	1.87	1.86	1.85	5	4.50
	17:07		Middle	2.5	28.40	28.40		8.37	8.37		27.52	27.52		89.1	87.8		5.96	5.87		1.85	1.81		4	
14/7/2016	9:00	Cloudy	Middle	2.5	27.60	27.60	27.65	8.32	8.32	8.36	24.06	24.06	24.14	89.2	89.1	89.1	6.15	6.14	6.14	2.47	2.50	2.52	8	8.00
	9:02		Middle	2.5	27.70	27.70		8.40	8.40		24.40	24.04		88.8	89.3		6.11	6.16		2.53	2.59		8	
16/7/2016	10:55	Fine	Middle	2.5	28.40	28.40	28.55	8.46	8.46	8.52	24.68	24.68	24.68	104.6	103.8	116.1	7.06	7.01	7.07	2.90	2.89	2.90	6	5.00
	10:57		Middle	2.5	28.70	28.70		8.58	8.58		24.68	24.68		105.8	150.2		7.11	7.10		2.89	2.93		4	
18/7/2016	14:29	Fine	Middle	2.5	30.00	30.00	30.00	8.66	8.66	8.70	24.87	24.87	24.85	105.4	104.3	94.7	6.96	6.89	6.73	5.47	5.77	5.56	11	11.50
	14:31		Middle	2.5	30.00	30.00		8.74	8.74		24.82	24.82		101.1	67.8		6.63	6.45		5.62	5.39		12	
20/7/2016	10:41	Fine	Middle	2.5	28.10	28.10	28.15	8.35	8.35	8.36	28.21	28.21	28.21	78.6	78.3	78.1	5.24	5.22	5.21	4.13	4.13	4.11	5	5.50
	10:43		Middle	2.5	28.20	28.20		8.37	8.37		28.20	28.20		77.9	77.5		5.20	5.17		4.11	4.06		6	
22/7/2016	14:00	Fine	Middle	3.0	28.50	28.50	28.60	8.38	8.38	8.37	29.87	29.87	29.87	95.5	93.7	94.4	6.27	6.15	6.20	2.86	2.86	4.15	4	3.50
	14:02		Middle	3.0	28.70	28.70		8.35	8.35		29.87	29.87		93.8	94.7		6.15	6.21		2.87	7.99		3	
25/7/2016	15:55	Sunny	Middle	2.5	28.50	28.00	28.38	8.31	8.31	8.33	31.31	31.31	31.19	80.2	80.0	77.5	5.26	5.24	5.07	4.15	4.14	4.29	8	7.50
	15:57		Middle	2.5	28.50	28.50		8.34	8.34		31.06	31.06		75.6	74.0		4.95	4.82		4.40	4.47		7	

Remarks:
Single underline denotes exceedance over Action Level.
Double underline denotes exceedance over Limit Level.



**Water Monitoring Result at P3 - APA
Mid-Ebb Tide**

Date	Time	Weather Condition	Sampling Depth	Water Temperature		pH		Salinity		DO Saturation		DO		Turbidity		Suspended Solids								
				°C		-		ppt		%		mg/L		NTU		mg/L								
				Value	Average	Value	Average	Value	Average	Value	Average	Value	Average	Value	Average	Value	Average							
27/6/2016	17:05	Sunny	Middle	3.0	29.40	29.40	29.45	8.95	8.95	8.96	24.70	24.70	24.70	91.9	93.2	92.0	6.12	6.21	6.12	6.31	6.30	6.21	9	8.50
	17:07		Middle	3.0	29.50	29.50		8.96	8.96		24.70	24.70		92.6	90.1		6.16	6.00		6.21	6.01		8	
30/6/2016	10:36	Fine	Middle	2.5	28.90	28.90	28.95	8.79	8.79	8.81	22.61	22.61	22.61	66.8	65.4	64.8	4.53	4.43	4.40	5.65	5.69	5.71	4	4.00
	10:38		Middle	2.5	29.00	29.00		8.82	8.82		22.60	22.60		64.2	62.9		4.35	4.27		5.72	5.78		4	
2/7/2016	10:54	Cloudy	Middle	2.5	28.80	28.80	28.80	8.73	8.73	8.74	22.76	22.76	22.63	61.9	60.5	60.2	4.21	4.12	4.10	5.36	5.35	5.41	4	3.50
	10:56		Middle	2.5	28.80	28.80		8.75	8.75		22.24	22.74		59.6	58.7		4.06	4.00		5.38	5.54		3	
4/7/2016	10:55	Fine	Middle	3.5	27.00	27.00	27.40	8.53	8.53	8.54	24.26	24.26	24.26	66.2	69.6	68.8	4.58	4.78	4.73	8.10	8.11	8.11	4	4.00
	10:57		Middle	3.5	27.80	27.80		8.54	8.54		24.25	24.25		70.1	69.2		4.81	4.75		8.11	8.11		4	
6/7/2016	-	Amber Rainstorm Warning Signal	Middle	-	-	-	#DIV/0!	-	-	#DIV/0!	-	-	#DIV/0!	-	-	#DIV/0!	-	-	#DIV/0!	-	-	#DIV/0!	-	#DIV/0!
	-		Middle	-	-	-	#DIV/0!	-	-	#DIV/0!	-	-	#DIV/0!	-	-	#DIV/0!	-	-	#DIV/0!	-	-	#DIV/0!	-	#DIV/0!
8/7/2016	15:07	Fine	Middle	2.5	28.90	28.90	29.00	8.38	8.38	8.39	25.84	25.83	25.81	92.3	92.4	92.8	6.26	6.17	6.22	2.25	2.23	2.30	5	4.50
	15:09		Middle	2.5	29.10	29.10		8.40	8.40		25.79	25.79		93.3	93.2		6.23	6.21		2.34	2.39		4	
11/7/2016	17:09	Fine	Middle	2.5	27.30	27.30	27.40	8.39	8.39	8.39	27.77	27.77	27.76	90.8	90.9	90.2	6.15	6.15	6.10	1.99	2.06	2.05	9	8.00
	17:11		Middle	2.5	27.50	27.50		8.39	8.39		27.74	27.74		89.8	89.1		6.07	6.03		2.08	2.05		7	
14/7/2016	09:04	Cloudy	Middle	2.5	27.30	27.30	27.30	8.42	8.42	8.43	24.35	24.35	24.37	87.9	86.7	86.4	6.09	6.00	5.98	2.35	2.35	2.35	4	4.50
	9:06		Middle	2.5	27.30	27.30		8.44	8.44		24.39	24.39		85.7	85.4		5.93	5.91		2.35	2.35		5	
16/7/2016	11:00	Fine	Middle	2.5	28.00	28.00	28.05	8.60	8.60	8.61	24.57	24.57	24.57	105.2	105.4	105.2	7.17	7.19	7.17	3.47	3.37	3.43	5	5.50
	11:02		Middle	2.5	28.10	28.10		8.61	8.61		24.57	24.57		105.0	105.2		7.16	7.17		3.37	3.52		6	
18/7/2016	14:33	Fine	Middle	2.5	28.90	28.90	29.00	8.73	8.73	8.75	24.94	24.94	24.94	94.8	94.7	95.4	6.35	6.33	6.39	4.01	4.20	4.06	11	10.00
	14:35		Middle	2.5	29.10	29.10		8.77	8.77		24.94	24.94		95.4	96.6		6.39	6.47		4.01	4.00		9	
20/7/2016	10:45	Fine	Middle	2.5	27.40	27.40	27.45	8.40	8.40	8.41	28.03	28.03	28.05	83.0	81.8	80.2	5.62	5.53	5.39	3.80	3.70	3.70	4	5.00
	10:47		Middle	2.5	27.50	27.50		8.41	8.41		28.06	28.06		79.0	76.9		5.23	5.17		3.69	3.62		6	
22/7/2016	14:05	Fine	Middle	3.0	27.60	27.60	27.70	8.35	8.35	8.35	29.72	29.72	29.73	94.5	96.4	94.9	6.30	6.43	6.33	3.35	3.34	3.34	5	4.50
	14:07		Middle	3.0	27.80	27.80		8.35	8.35		29.73	29.73		93.9	94.9		6.26	6.32		3.33	3.34		4	
25/7/2016	15:59	Sunny	Middle	2.5	26.70	26.90	26.95	8.38	8.38	8.38	31.28	31.28	31.26	83.2	81.8	82.1	5.57	5.47	5.49	4.13	4.14	4.07	6	6.50
	16:01		Middle	2.5	27.10	27.10		8.38	8.39		31.23	31.23		81.0	82.3		5.42	5.50		4.19	3.82		7	

Remarks:
Single underline denotes exceedance over Action Level.
Double underline denotes exceedance over Limit Level.



**Water Monitoring Result at P4 - SOC
Mid-Ebb Tide**

Date	Time	Weather Condition	Sampling Depth	Water Temperature		pH		Salinity		DO Saturation		DO		Turbidity		Suspended Solids								
				°C		-		ppt		%		mg/L		NTU		mg/L								
				Value	Average	Value	Average	Value	Average	Value	Average	Value	Average	Value	Average	Value	Average							
27/6/2016	17:10	Sunny	Middle	3.0	29.10	29.10	29.15	8.97	8.97	8.97	24.86	24.86	24.85	88.1	90.4	90.0	5.89	5.05	5.78	6.00	6.04	6.06	8	7.50
	17:12		Middle	3.0	29.20	29.20		8.97	8.97		24.84	24.84		90.8	90.7		6.07	6.10		6.10	6.11		7	
30/6/2016	10:40	Fine	Middle	2.5	28.70	28.70	28.70	8.84	8.84	8.85	22.84	22.84	22.84	65.2	64.6	64.4	4.43	4.40	4.63	5.89	5.82	5.93	4	5.00
	10:42		Middle	2.5	28.70	28.70		8.88	8.85		22.84	22.84		64.1	63.7		4.86	4.84		5.92	6.10		6	
2/7/2016	10:58	Cloudy	Middle	2.5	28.80	28.80	28.80	8.75	8.75	8.76	22.70	22.70	22.72	66.7	66.3	66.3	4.54	4.51	4.51	7.42	7.37	7.35	5	4.50
	11:00		Middle	2.5	28.80	28.80		8.76	8.76		22.74	22.74		66.2	65.8		4.50	4.47		7.24	7.36		4	
4/7/2016	11:00	Fine	Middle	3.5	27.50	27.50	27.55	8.55	8.55	8.56	24.27	24.27	24.27	70.3	70.9	70.8	4.85	4.89	4.88	7.91	7.90	7.87	4	4.50
	11:02		Middle	3.5	27.60	27.60		8.56	8.56		24.26	24.26		70.9	71.1		4.89	4.90		7.78	7.88		5	
6/7/2016	-	Amber Rainstorm Warning Signal	Middle	-	-	-	#DIV/0!	-	-	#DIV/0!	-	-	#DIV/0!	-	-	#DIV/0!	-	-	#DIV/0!	-	-	#DIV/0!	-	#DIV/0!
	-		Middle	-	-	-		-	-		-	-		-	-		-	-		-	-		-	
8/7/2016	15:11	Fine	Middle	2.5	28.30	28.30	28.25	8.41	8.41	8.41	25.82	25.82	25.82	93.3	93.0	93.1	6.32	6.29	6.30	1.99	1.91	1.92	5	5.00
	15:13		Middle	2.5	28.20	28.20		8.41	8.41		25.81	25.81		93.2	92.8		6.30	6.27		1.89	1.89		5	
11/7/2016	17:13	Fine	Middle	2.5	26.70	26.70	26.75	8.35	8.35	8.33	28.85	28.85	28.86	75.3	75.7	76.8	5.12	5.15	5.22	2.40	2.40	2.43	7	6.00
	17:15		Middle	2.5	26.80	26.80		8.30	8.30		28.87	28.87		77.4	78.7		5.27	5.35		2.44	2.46		5	
14/7/2016	9:08	Cloudy	Middle	2.5	27.20	27.20	27.15	8.43	8.43	8.43	24.61	24.61	24.66	88.7	88.7	88.7	6.15	6.14	6.14	2.28	2.26	2.33	10	9.00
	9:10		Middle	2.5	27.10	27.10		8.43	8.43		24.70	24.70		89.0	88.2		6.16	6.11		2.31	2.45		8	
16/7/2016	11:05	Fine	Middle	2.5	27.80	27.80	27.85	8.62	8.62	8.62	24.52	24.52	24.52	104.6	105.1	103.6	7.16	7.20	7.09	3.51	3.35	3.42	5	5.50
	11:07		Middle	2.5	27.90	27.90		8.62	8.62		24.52	24.52		102.1	102.4		6.99	7.01		3.39	3.41		6	
18/7/2016	14:37	Fine	Middle	2.5	28.50	28.50	28.50	8.77	8.77	8.78	25.03	25.03	25.02	96.6	96.6	96.0	6.53	6.52	6.48	4.79	4.71	4.71	12	11.50
	14:39		Middle	2.5	28.50	28.50		8.78	8.78		25.01	25.01		95.7	94.9		6.45	6.41		4.70	4.64		11	
20/7/2016	10:49	Fine	Middle	2.5	27.60	27.60	27.50	8.42	8.42	8.43	27.76	27.76	27.81	81.8	78.0	78.4	5.58	5.31	5.34	3.46	3.53	3.58	4	4.00
	10:51		Middle	2.5	27.40	27.40		8.44	8.44		27.85	27.85		76.8	76.8		5.22	5.23		3.67	3.67		4	
22/7/2016	14:10	Fine	Middle	3.0	27.10	27.10	27.15	8.35	8.35	8.35	29.77	29.77	29.77	92.0	91.7	92.0	6.19	6.17	6.19	3.24	3.29	3.29	4	3.50
	14:12		Middle	3.0	27.20	27.20		8.34	8.34		29.77	29.77		92.5	91.8		6.22	6.17		3.32	3.30		3	
25/7/2016	16:03	Sunny	Middle	2.5	27.10	27.10	27.05	8.39	8.39	8.40	30.98	30.98	31.08	90.3	89.0	88.5	6.05	5.96	5.92	4.13	4.03	4.00	6	6.50
	16:05		Middle	2.5	27.00	27.00		8.40	8.40		31.18	31.18		87.5	87.0		5.86	5.82		4.01	3.82		7	

Remarks:
Single underline denotes exceedance over Action Level.
Double underline denotes exceedance over Limit Level.



**Water Monitoring Result at P5 - WCT / RT / IT
Mid-Ebb Tide**

Date	Time	Weather Condition	Sampling Depth	m	Water Temperature		pH		Salinity		DO Saturation		DO		Turbidity		Suspended Solids							
					°C		-		ppt		%		mg/L		NTU		mg/L							
					Value	Average	Value	Average	Value	Average	Value	Average	Value	Average	Value	Average	Value	Average						
27/6/2016	17:15	Sunny	Middle	3.0	28.60	28.60	28.60	8.97	8.97	8.97	24.87	24.87	24.88	94.5	96.1	94.7	6.37	6.48	6.39	6.69	6.69	6.55	7	7.00
	17:17		Middle	3.0	28.60	28.60	28.60	8.96	8.96	8.96	24.88	24.88	24.88	93.9	94.4	94.7	6.34	6.37	6.39	6.48	6.34	6.55	7	7.00
30/6/2016	10:44	Fine	Middle	2.5	28.60	28.60	28.65	8.85	8.85	8.86	22.89	22.89	22.89	67.5	66.3	65.6	4.60	4.52	4.47	5.05	5.03	4.95	6	6.50
	10:46		Middle	2.5	28.70	28.70	28.65	8.86	8.86	8.86	22.89	22.89	22.89	65.0	63.4	65.6	4.43	4.32	4.47	4.85	4.88	4.95	7	6.50
2/7/2016	11:02	Cloudy	Middle	2.5	28.60	28.60	28.60	8.77	8.77	8.78	22.62	22.62	22.66	71.3	71.5	70.4	4.87	4.88	4.78	6.56	6.42	6.57	4	4.00
	11:04		Middle	2.5	28.60	28.60	28.60	8.78	8.78	8.78	22.69	22.69	22.66	70.1	68.7	70.4	4.74	4.64	4.78	6.44	6.86	6.57	4	4.00
4/7/2016	11:05	Fine	Middle	3.5	27.40	27.40	27.45	8.56	8.56	8.56	24.22	24.22	24.23	70.1	72.2	71.7	4.84	4.89	4.93	8.00	7.95	7.94	6	6.00
	11:07		Middle	3.5	27.50	27.50	27.45	8.56	8.56	8.56	24.23	24.23	24.23	72.5	72.1	71.7	5.00	4.98	4.93	7.91	7.90	7.94	6	6.00
6/7/2016	-	Amber Rainstorm Warning Signal	Middle	-	-	-	#DIV/0!	-	-	#DIV/0!	-	-	#DIV/0!	-	-	#DIV/0!	-	-	#DIV/0!	-	-	#DIV/0!	-	#DIV/0!
	-		Middle	-	-	-	#DIV/0!	-	-	#DIV/0!	-	-	#DIV/0!	-	-	#DIV/0!	-	-	#DIV/0!	-	-	#DIV/0!	-	#DIV/0!
8/7/2016	15:15	Fine	Middle	2.5	28.40	28.40	28.40	8.41	8.41	8.41	25.80	25.80	25.80	85.0	83.2	82.7	5.71	5.60	5.56	2.11	2.18	2.08	8	7.50
	15:17		Middle	2.5	28.40	28.40	28.40	8.41	8.41	8.41	25.80	25.80	25.80	81.8	80.8	82.7	5.51	5.42	5.56	2.00	2.03	2.08	7	7.50
11/7/2016	17:17	Fine	Middle	2.5	27.00	27.00	27.05	8.35	8.35	8.37	27.59	27.59	27.59	99.5	99.7	98.8	6.78	6.80	6.74	1.62	1.63	1.61	8	8.00
	17:19		Middle	2.5	27.10	27.10	27.05	8.39	8.39	8.37	27.59	27.59	27.59	97.7	98.1	98.8	6.67	6.69	6.74	1.60	1.59	1.61	8	8.00
14/7/2016	9:12	Cloudy	Middle	2.5	27.00	27.00	27.05	8.43	8.43	8.43	24.65	24.65	24.65	80.6	79.6	79.1	5.59	5.52	5.49	2.32	2.41	2.38	10	10.50
	9:14		Middle	2.5	27.10	27.10	27.05	8.43	8.43	8.43	24.64	24.64	24.65	78.7	77.5	79.1	5.46	5.37	5.49	2.42	2.35	2.38	11	10.50
16/7/2016	11:10	Fine	Middle	2.5	27.80	27.80	27.85	8.62	8.62	8.62	24.55	24.55	25.80	99.2	99.6	99.9	6.79	6.82	6.84	3.55	3.53	3.48	6	6.00
	11:12		Middle	2.5	27.90	27.90	27.85	8.62	8.62	8.62	29.55	24.55	25.80	101.1	99.8	99.9	6.92	6.83	6.84	3.44	3.40	3.48	6	6.00
18/7/2016	14:41	Fine	Middle	2.5	28.30	28.30	28.35	8.78	8.78	8.77	25.05	25.05	25.04	94.5	96.5	94.2	6.40	6.53	6.38	4.34	4.51	4.54	12	12.50
	14:43		Middle	2.5	28.40	28.40	28.35	8.76	8.76	8.77	25.02	25.02	25.04	94.4	91.5	94.2	6.39	6.19	6.38	4.68	4.63	4.54	13	12.50
20/7/2016	10:53	Fine	Middle	2.5	27.20	27.20	27.25	8.44	8.44	8.44	27.57	27.57	27.67	85.4	84.3	84.0	5.79	5.73	5.71	2.83	2.99	2.90	4	5.00
	10:55		Middle	2.5	27.30	27.30	27.25	8.44	8.44	8.44	27.77	27.77	27.67	83.6	82.8	84.0	5.68	5.63	5.71	2.90	2.88	2.90	6	5.00
22/7/2016	14:15	Fine	Middle	3.0	27.10	27.10	27.15	8.34	8.34	8.34	29.80	29.80	29.80	89.2	89.3	89.9	6.00	6.01	6.06	2.89	2.88	2.89	4	4.00
	14:17		Middle	3.0	27.20	27.20	27.15	8.33	8.33	8.34	29.80	29.80	29.80	89.8	91.2	89.9	6.10	6.12	6.06	2.88	2.89	2.89	4	4.00
25/7/2016	16:07	Sunny	Middle	2.5	27.00	27.00	26.95	8.40	8.40	8.40	31.17	31.17	31.17	78.8	77.8	77.7	5.29	5.23	5.20	4.37	4.33	4.31	6	6.00
	16:09		Middle	2.5	26.90	26.90	26.95	8.40	8.40	8.40	31.16	31.16	31.17	77.7	76.4	77.7	5.17	5.12	5.20	4.27	4.25	4.31	6	6.00

Remarks:
Single underline denotes exceedance over Action Level.
Double underline denotes exceedance over Limit Level.



**Water Monitoring Result at RW21-P789 - Sun Hung Kai Centre
Mid-Ebb Tide**

Date	Time	Weather Condition	Sampling Depth		Water Temperature		pH			Salinity		DO Saturation		DO		Turbidity		Suspended Solids						
					°C		-		ppt		%		mg/L		NTU		mg/L							
			m	Value	Average	Value	Average	Value	Average	Value	Average	Value	Average	Value	Average	Value	Average	Value	Average					
27/6/2016	17:31	Sunny	Middle	3.5	28.60	28.60	28.60	8.84	8.84	8.86	26.10	26.10	26.10	88.4	87.2	85.7	5.93	5.84	5.75	5.61	5.60	5.55	5	4.50
	17:33		Middle	3.5	28.60	28.60	28.60	8.87	8.87	8.86	26.09	26.09	26.10	84.4	82.8	85.7	5.66	5.55	5.75	5.49	5.48	5.55	4	4.50
30/6/2016	11:00	Fine	Middle	3.5	28.50	28.50	28.60	8.73	8.73	8.50	24.38	24.38	24.54	64.0	63.6	63.6	4.34	4.31	4.31	6.96	6.93	6.93	8	8.00
	11:02		Middle	3.5	28.70	28.70	28.60	8.26	8.26	8.50	24.69	24.69	24.54	63.8	63.0	63.6	4.31	4.26	4.31	6.92	6.91	6.93	8	8.00
2/7/2016	11:19	Cloudy	Middle	3.5	28.30	28.30	28.30	8.65	8.65	8.68	23.46	23.46	23.46	70.0	68.4	67.5	4.78	4.68	4.61	6.90	6.83	6.79	5	5.00
	11:21		Middle	3.5	28.30	28.30	28.30	8.71	8.71	8.68	23.45	23.45	23.46	66.3	65.2	67.5	4.53	4.43	4.61	6.71	6.72	6.79	5	5.00
4/7/2016	13:30	Fine	Middle	3.5	28.80	28.80	28.95	8.48	8.48	8.51	24.11	24.11	24.08	71.3	72.1	70.9	4.81	4.86	4.78	6.83	6.78	6.81	4	3.50
	13:32		Middle	3.5	29.10	29.10	28.95	8.53	8.53	8.51	24.05	24.05	24.08	70.0	70.3	70.9	4.72	4.74	4.78	6.80	6.81	6.81	3	3.50
6/7/2016	-	Amber Rainstorm Warning Signal	Middle	-	-	-	#DIV/0!	-	-	#DIV/0!	-	-	#DIV/0!	-	-	#DIV/0!	-	-	#DIV/0!	-	-	#DIV/0!	-	#DIV/0!
	-		Middle	-	-	-	#DIV/0!	-	-	#DIV/0!	-	-	#DIV/0!	-	-	#DIV/0!	-	-	#DIV/0!	-	-	#DIV/0!	-	#DIV/0!
8/7/2016	15:25	Fine	Middle	3.5	28.00	28.00	28.05	8.34	8.34	8.35	26.47	26.47	26.43	100.7	102.4	100.9	6.80	6.91	6.81	2.93	2.89	2.81	8	8.00
	15:27		Middle	3.5	28.10	28.10	28.05	8.36	8.36	8.35	26.39	26.39	26.43	101.0	99.6	100.9	6.81	6.72	6.81	2.70	2.70	2.81	8	8.00
11/7/2016	16:00	Fine	Middle	4.0	27.60	27.60	27.75	8.31	8.31	8.31	28.48	28.48	28.48	88.4	89.8	86.7	5.93	6.02	5.95	2.34	2.34	2.37	7	7.00
	16:02		Middle	4.0	27.90	27.90	27.75	8.31	8.31	8.31	28.47	28.47	28.48	88.4	80.2	86.7	5.93	5.90	5.95	2.39	2.41	2.37	7	7.00
14/7/2016	9:25	Cloudy	Middle	3.5	26.80	26.80	26.80	8.34	8.34	8.34	25.88	25.88	25.88	70.2	69.4	69.3	4.85	4.79	4.79	1.98	2.01	1.95	13	14.00
	9:27		Middle	3.5	26.80	26.80	26.80	8.34	8.34	8.34	25.87	25.87	25.88	68.9	68.7	69.3	4.76	4.75	4.79	2.00	1.81	1.95	15	14.00
16/7/2016	11:22	Fine	Middle	3.5	28.00	28.00	28.05	8.49	8.49	8.48	25.49	25.49	25.48	89.5	89.9	89.6	6.08	6.11	6.08	2.97	2.99	3.04	4	4.50
	11:24		Middle	3.5	28.10	28.10	28.05	8.47	8.47	8.48	25.46	25.46	25.48	88.7	90.2	89.6	6.02	6.12	6.08	3.08	3.11	3.04	5	4.50
18/7/2016	14:57	Fine	Middle	3.5	28.40	28.40	28.40	8.61	8.61	8.61	26.08	26.08	26.08	85.7	85.1	84.5	5.76	5.72	5.68	4.04	4.04	4.09	9	8.00
	14:59		Middle	3.5	28.40	28.40	28.40	8.60	8.60	8.61	26.07	26.07	26.08	83.8	83.3	84.5	5.64	5.60	5.68	4.09	4.17	4.09	7	8.00
20/7/2016	11:07	Fine	Middle	3.5	26.20	26.20	26.30	8.38	8.38	8.38	29.00	29.00	28.99	78.3	77.2	76.3	5.36	5.28	5.21	2.91	3.00	3.07	6	5.00
	11:09		Middle	3.5	26.40	26.40	26.30	8.38	8.38	8.38	28.98	28.98	28.99	75.7	74.0	76.3	5.19	5.01	5.21	3.08	3.29	3.07	4	5.00
22/7/2016	14:41	Fine	Middle	4.0	26.40	26.40	26.45	8.33	8.33	8.33	30.25	30.25	30.24	72.2	71.2	71.0	4.90	4.83	4.81	3.60	3.39	3.48	5	5.00
	14:43		Middle	4.0	26.50	26.50	26.45	8.32	8.32	8.33	30.22	30.22	30.24	70.4	70.0	71.0	4.77	4.75	4.81	3.44	3.48	3.48	5	5.00
25/7/2016	16:25	Sunny	Middle	3.5	26.80	26.80	26.85	8.31	8.31	8.33	31.46	31.46	31.44	82.0	80.8	81.1	5.49	5.41	5.43	4.47	4.34	4.40	6	6.00
	16:27		Middle	3.5	26.90	26.90	26.85	8.34	8.34	8.33	31.42	31.42	31.44	80.9	80.8	81.1	5.41	5.41	5.43	4.34	4.46	4.40	6	6.00

Remarks:
Single underline denotes exceedance over Action Level.
Double underline denotes exceedance over Limit Level.



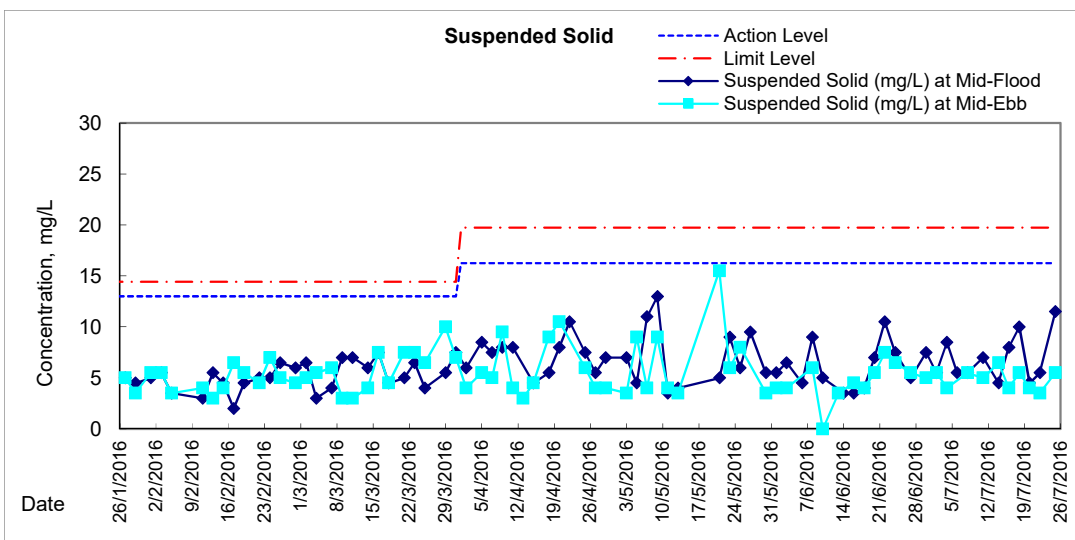
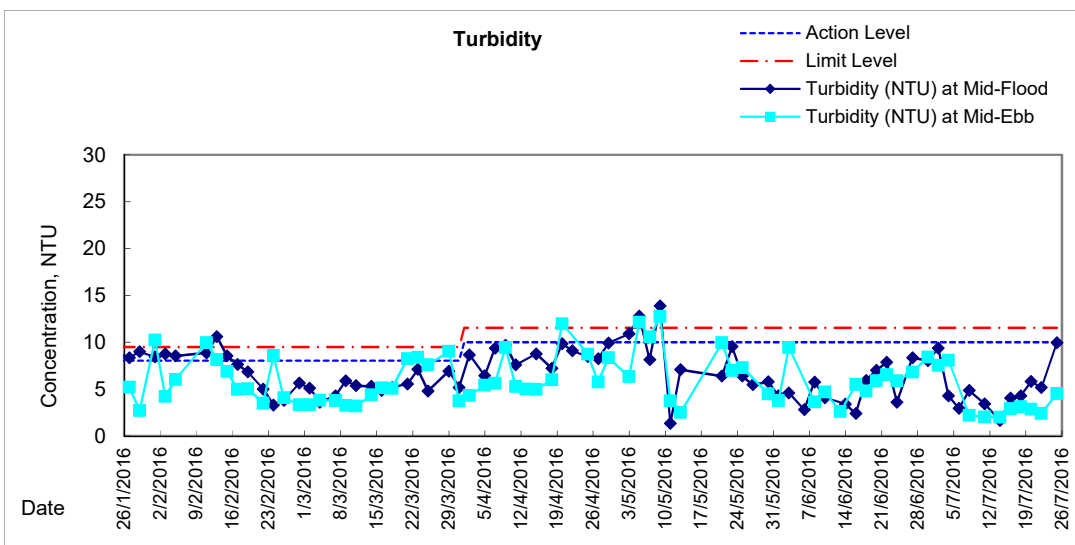
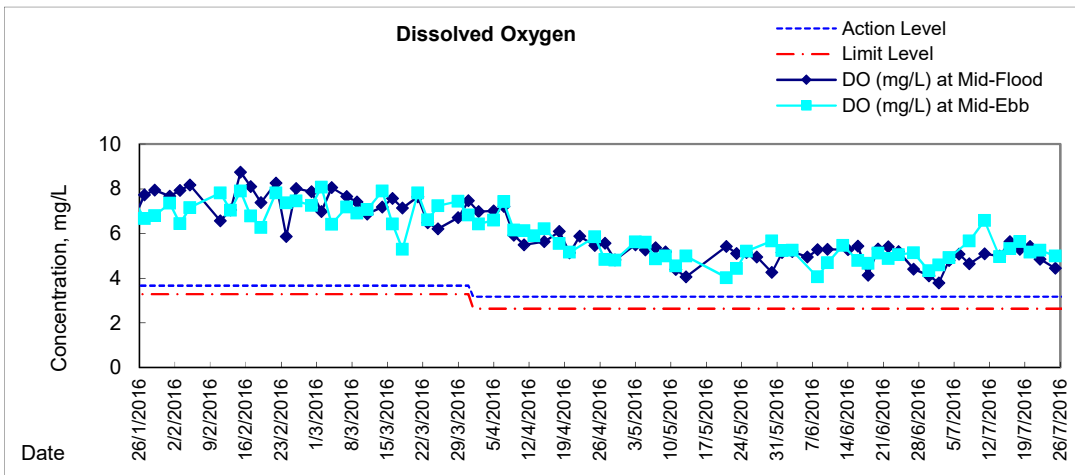
**Water Monitoring Result at WSD19 - Sheung Wan
Mid-Ebb Tide**

Date	Time	Weather Condition	Sampling Depth		Water Temperature		pH		Salinity		DO Saturation		DO		Turbidity		Suspended Solids							
					°C		-		ppt		%		mg/L		NTU		mg/L							
			m	Value	Average	Value	Average	Value	Average	Value	Average	Value	Average	Value	Average	Value	Average	Value	Average					
27/6/2016	16:14	Sunny	Middle	3.5	29.20	29.70	29.88	8.70	8.70	8.74	24.89	24.90	24.80	78.8	76.1	78.0	5.19	4.98	5.13	6.70	6.88	6.83	6	5.50
	16:16		Middle	3.5	30.30	30.30	29.88	8.78	8.78	8.74	24.71	24.71	24.80	78.3	78.9	78.0	5.15	5.18	5.13	6.90	6.83	6.83	5	5.50
30/6/2016	8:18	Fine	Middle	3.5	28.10	28.10	28.15	8.50	8.50	8.55	23.88	23.88	23.88	64.8	62.9	63.2	4.43	4.30	4.32	8.49	8.53	8.41	5	5.00
	8:20		Middle	3.5	28.20	28.20	28.15	8.59	8.59	8.55	23.88	23.88	23.88	62.2	63.0	63.2	4.25	4.30	4.32	8.35	8.26	8.41	5	5.00
2/7/2016	10:09	Cloudy	Middle	3.5	28.40	28.40	28.50	8.45	8.45	8.52	23.02	23.02	22.99	69.0	67.8	67.0	4.72	4.62	4.58	7.72	7.61	7.53	6	5.50
	10:11		Middle	3.5	28.60	28.60	28.50	8.59	8.59	8.52	22.96	22.96	22.99	66.0	65.1	67.0	4.53	4.45	4.58	7.47	7.30	7.53	5	5.50
4/7/2016	10:05	Fine	Middle	4.0	28.00	28.00	28.05	8.45	8.45	8.48	23.47	23.47	23.48	72.6	72.1	71.5	4.98	4.96	4.91	8.02	8.08	8.07	4	4.00
	10:07		Middle	4.0	28.10	28.10	28.05	8.50	8.50	8.48	23.48	23.48	23.48	70.1	71.3	71.5	4.81	4.89	4.91	8.07	8.09	8.07	4	4.00
6/7/2016	-	Amber Rainstorm Warning Signal	Middle	-	-	-	#DIV/0!	-	-	#DIV/0!	-	-	#DIV/0!	-	-	#DIV/0!	-	-	#DIV/0!	-	-	#DIV/0!	-	#DIV/0!
	-		Middle	-	-	-	#DIV/0!	-	-	#DIV/0!	-	-	#DIV/0!	-	-	#DIV/0!	-	-	#DIV/0!	-	-	#DIV/0!	-	#DIV/0!
8/7/2016	14:20	Fine	Middle	3.5	29.80	29.80	29.80	7.96	7.96	8.03	25.91	25.91	25.79	88.9	89.0	88.0	5.69	5.73	5.66	2.20	2.22	2.21	5	5.50
	14:22		Middle	3.5	29.80	29.80	29.80	8.10	8.10	8.03	25.67	25.67	25.79	88.2	85.8	88.0	5.68	5.53	5.66	2.22	2.21	2.21	6	5.50
11/7/2016	15:20	Fine	Middle	3.5	28.10	28.10	28.25	8.29	8.29	8.32	27.29	27.29	27.29	98.4	99.6	98.4	6.58	6.66	6.58	2.09	2.04	2.04	4	5.00
	15:22		Middle	3.5	28.40	28.40	28.25	8.35	8.35	8.32	27.28	27.28	27.29	98.1	97.3	98.4	6.56	6.50	6.58	2.01	2.00	2.04	6	5.00
14/7/2016	8:15	Cloudy	Middle	3.5	26.70	26.70	26.70	8.35	8.35	8.34	25.19	25.19	25.19	71.8	71.6	71.4	5.00	4.97	4.96	1.98	1.99	1.99	6	6.50
	8:17		Middle	3.5	26.70	26.70	26.70	8.33	8.33	8.34	25.19	25.19	25.19	70.8	71.2	71.4	4.92	4.95	4.96	1.99	1.99	1.99	7	6.50
16/7/2016	10:13	Fine	Middle	3.5	29.20	29.20	29.05	8.34	8.34	8.38	24.70	24.70	24.73	80.0	79.8	79.1	5.37	5.37	5.32	2.96	2.91	2.91	4	4.00
	10:15		Middle	3.5	28.90	28.90	29.05	8.41	8.41	8.38	24.75	24.75	24.73	78.9	77.8	79.1	5.30	5.23	5.32	2.89	2.89	2.91	4	4.00
18/7/2016	11:26	Fine	Middle	3.5	27.20	27.20	27.30	8.28	8.28	8.31	27.30	27.30	27.27	83.2	82.6	82.9	5.66	5.62	5.64	3.06	3.08	3.11	6	5.50
	11:28		Middle	3.5	27.40	27.40	27.30	8.33	8.33	8.31	27.23	27.23	27.27	82.6	83.1	82.9	5.62	5.65	5.64	3.06	3.24	3.11	5	5.50
20/7/2016	9:57	Fine	Middle	3.5	27.60	27.60	27.65	8.33	8.33	8.33	27.73	27.73	27.70	75.7	77.3	76.3	5.12	5.22	5.15	2.90	2.81	2.87	4	4.00
	9:59		Middle	3.5	27.70	27.70	27.65	8.33	8.33	8.33	27.67	27.67	27.70	76.9	75.1	76.3	5.20	5.07	5.15	2.89	2.88	2.87	4	4.00
22/7/2016	11:03	Fine	Middle	4.0	27.90	27.90	28.10	8.37	8.37	8.39	29.55	29.55	29.55	90.9	90.0	90.6	6.02	5.96	5.24	2.34	2.42	2.41	3	3.50
	11:05		Middle	4.0	28.30	28.30	28.10	8.40	8.40	8.39	29.55	29.55	29.55	91.2	90.1	90.6	3.03	5.96	5.24	2.43	2.43	2.41	4	3.50
25/7/2016	15:06	Sunny	Middle	3.5	27.30	27.30	27.40	8.32	8.32	8.32	31.58	31.58	31.54	75.9	74.9	75.1	5.04	4.97	4.99	4.45	4.90	4.53	6	5.50
	15:08		Middle	3.5	27.50	27.50	27.40	8.32	8.32	8.32	31.50	31.50	31.54	75.0	74.7	75.1	4.98	4.96	4.99	4.48	4.28	4.53	5	5.50

Remarks:
Single underline denotes exceedance over Action Level.
Double underline denotes exceedance over Limit Level.

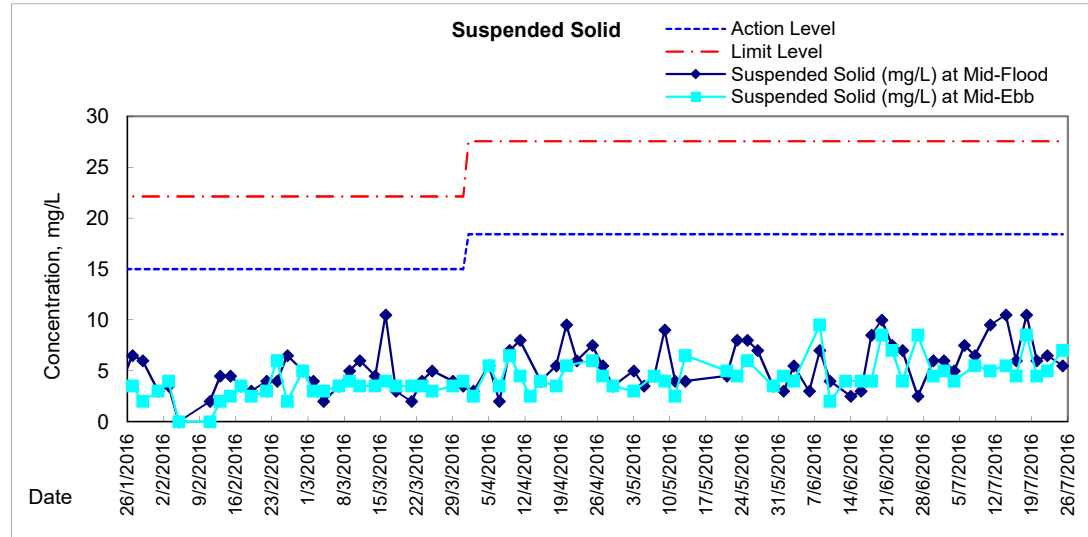
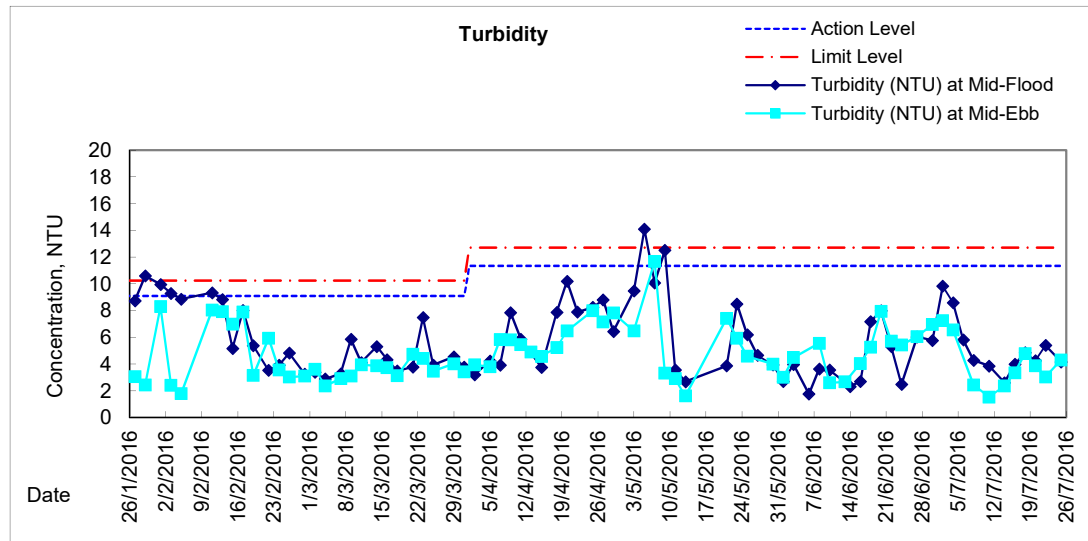
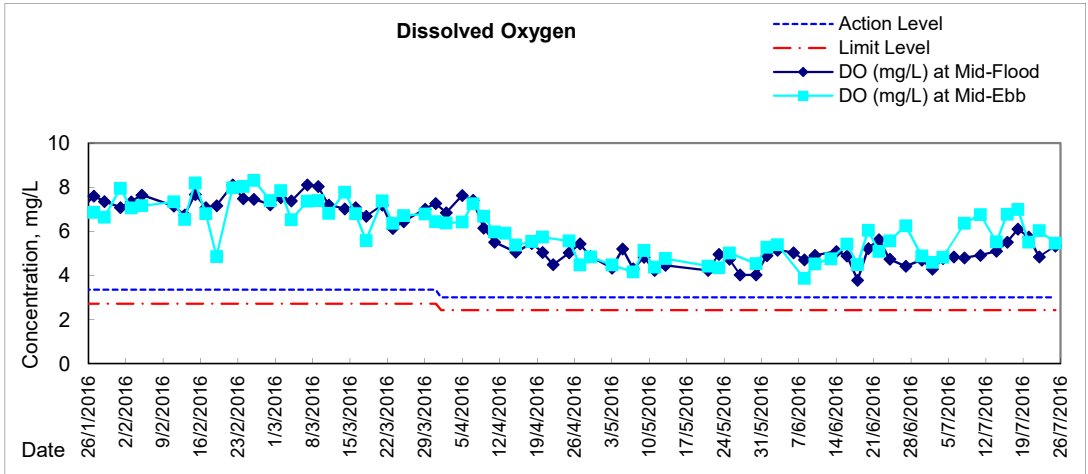


Graphic Presentation of Water Quality Result of WSD19 - Sheung Wan



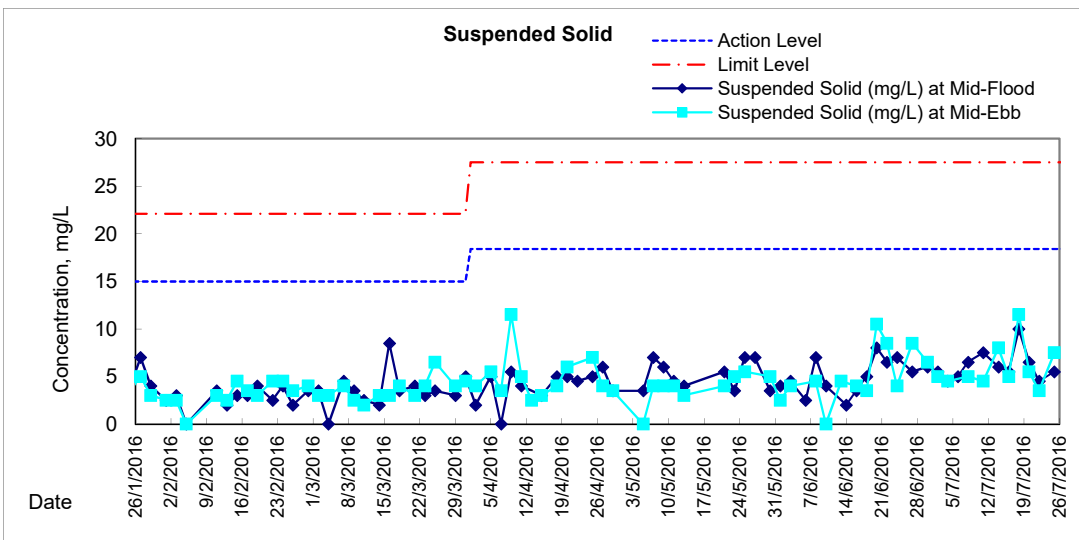
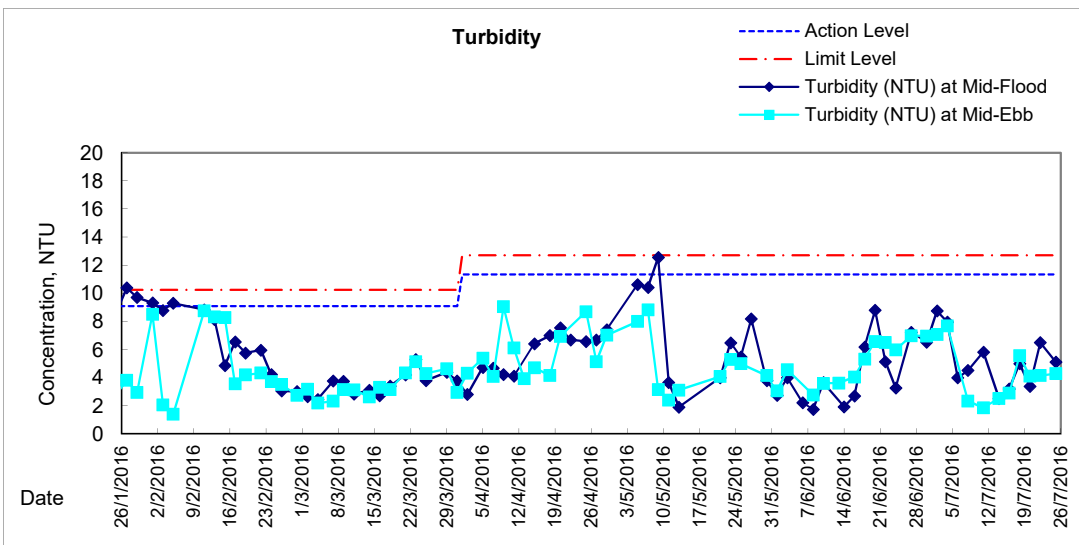
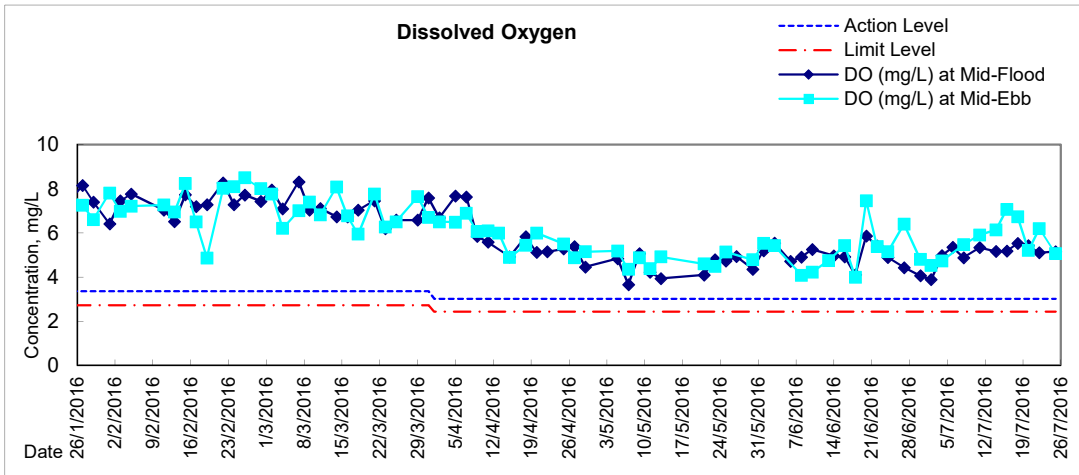


Graphic Presentation of Water Quality Result of C1 - HKCEC



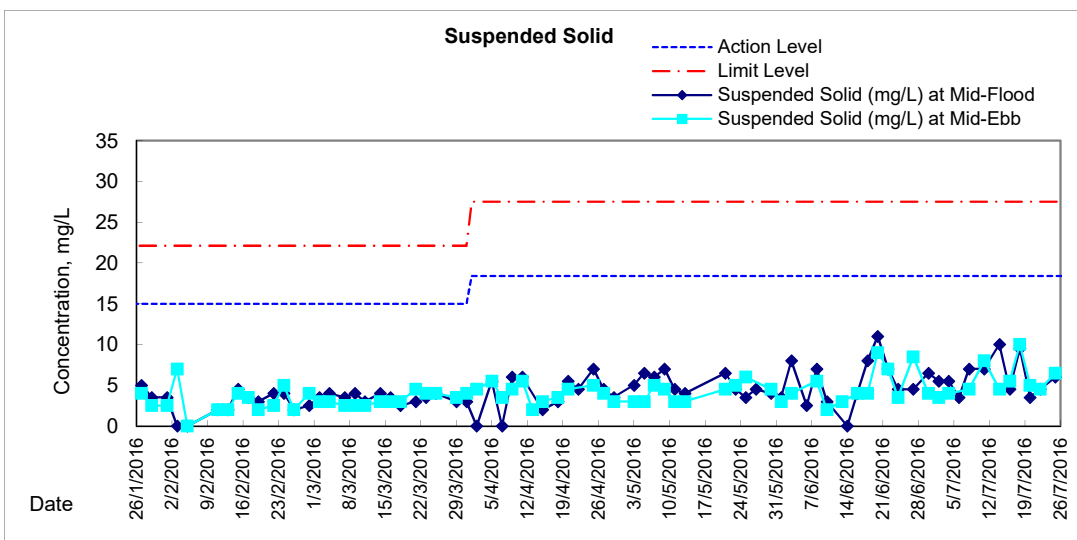
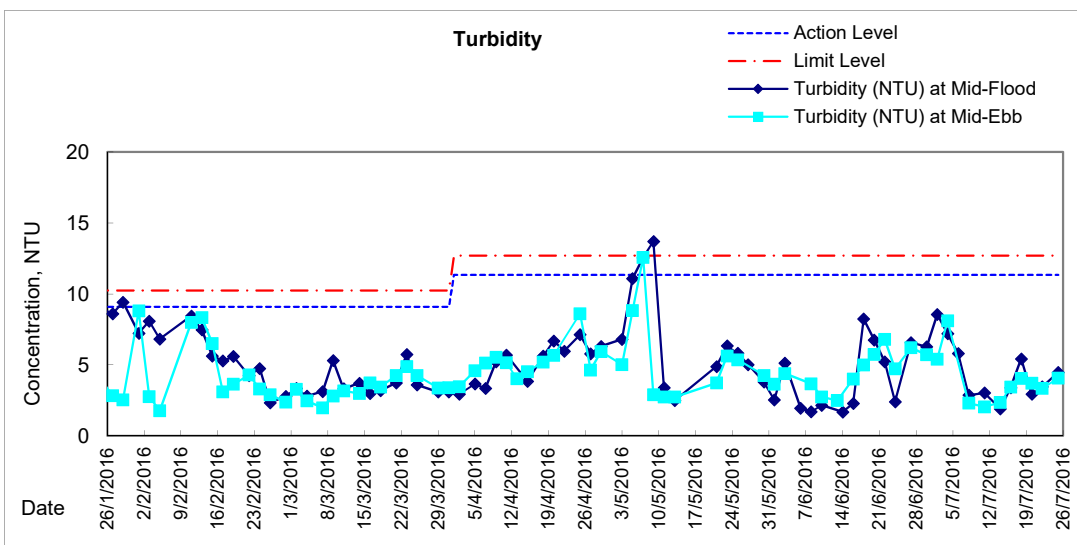
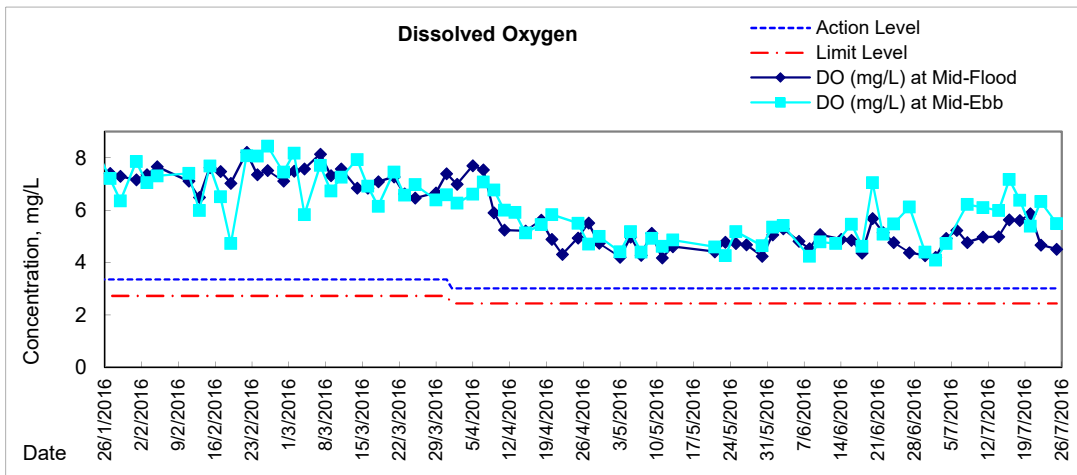


Graphic Presentation of Water Quality Result of P1 - HKCEC Phase I



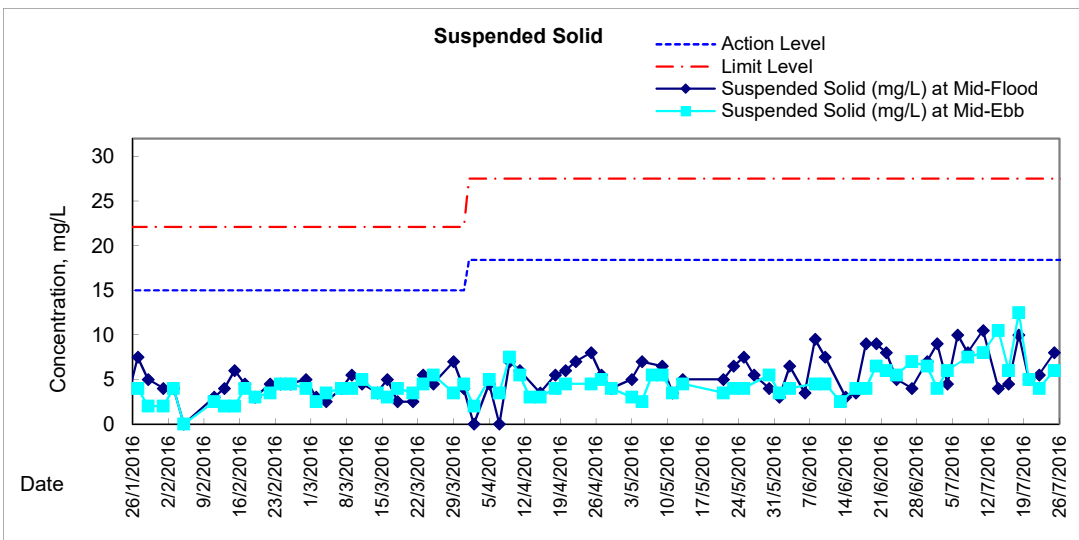
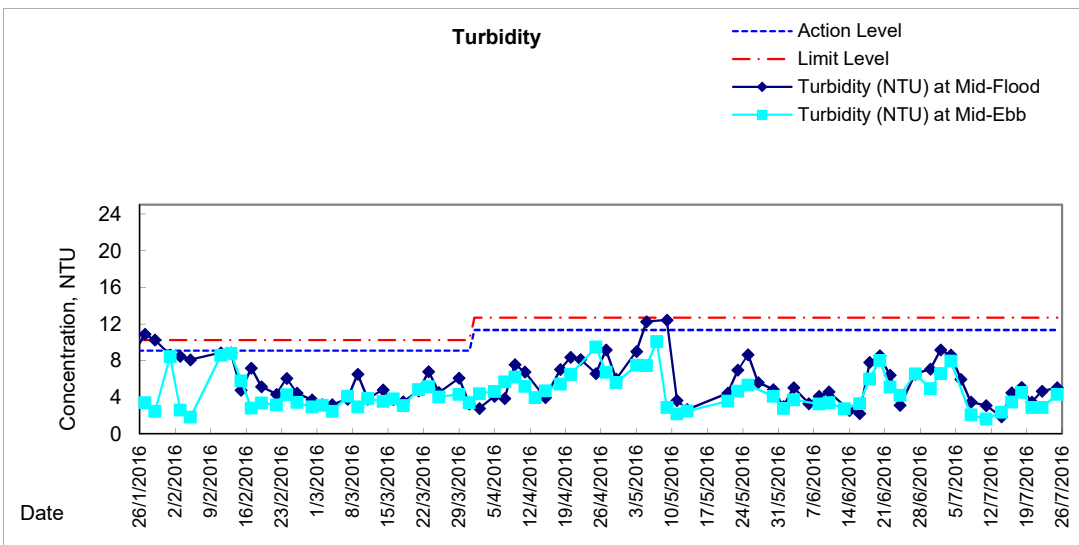
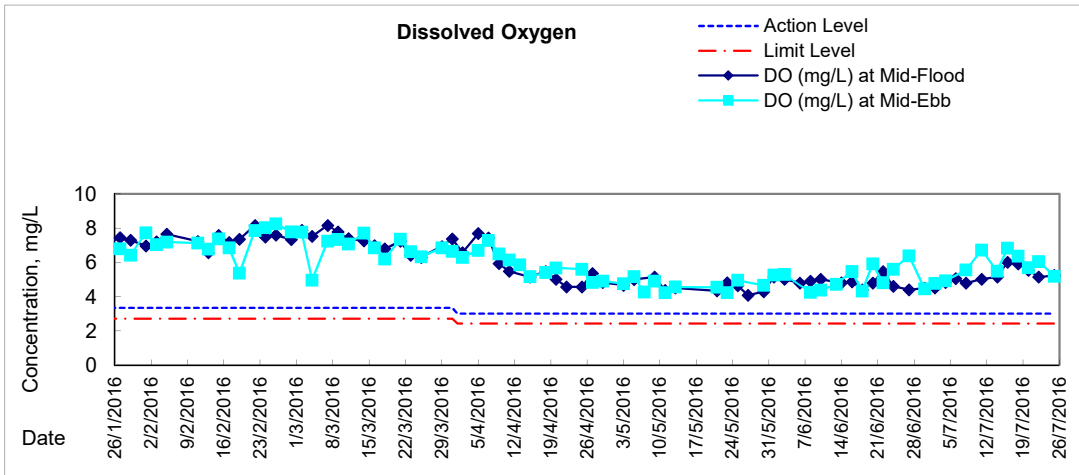


Graphic Presentation of Water Quality Result of P3 - APA



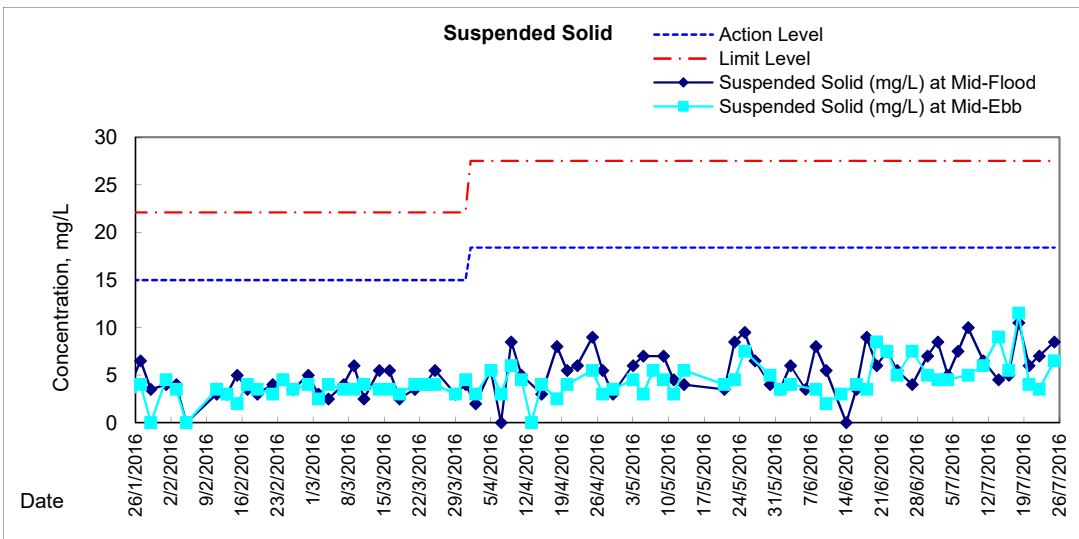
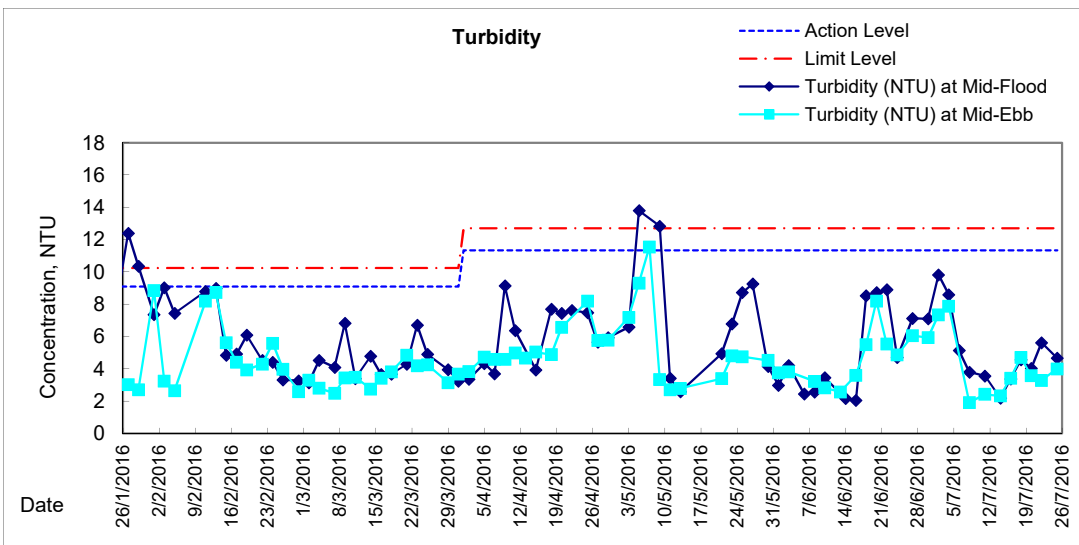
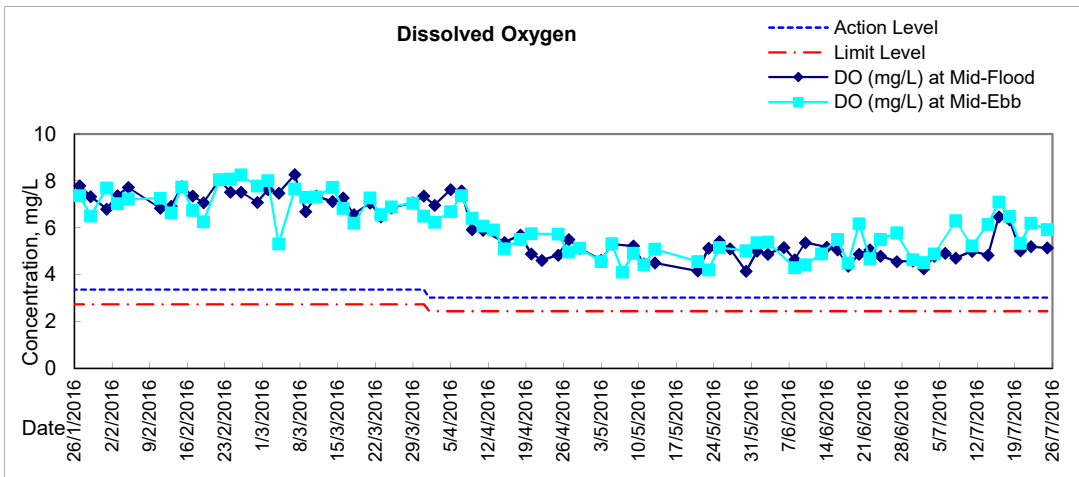


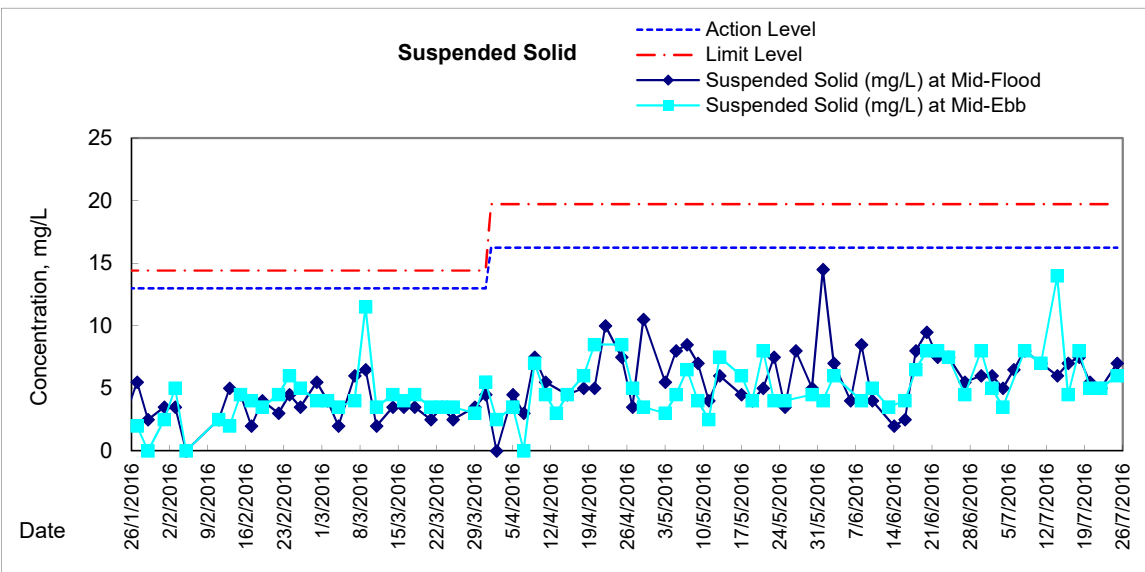
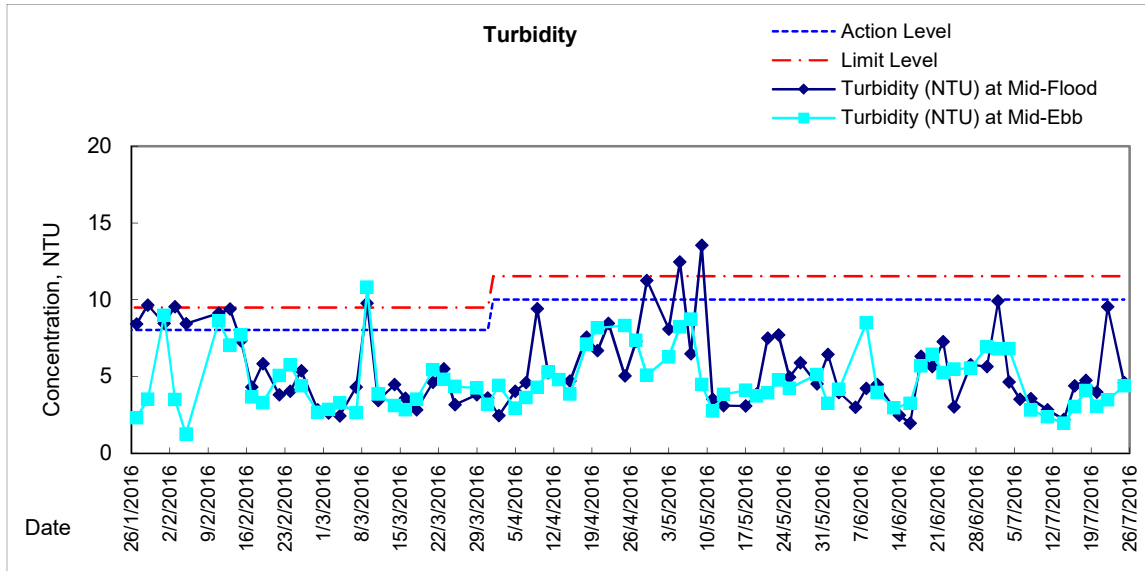
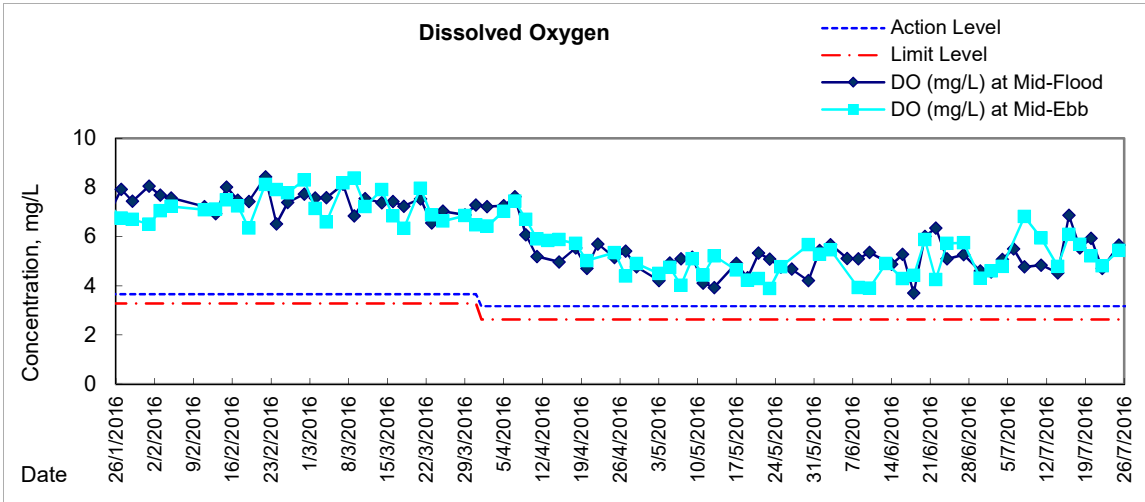
Graphic Presentation of Water Quality Result of P5 - WCT / RT / IT





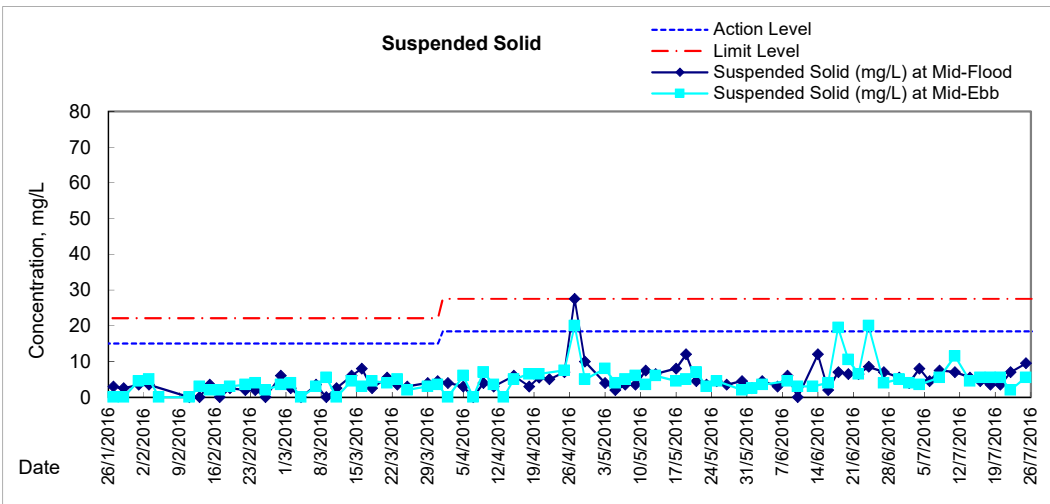
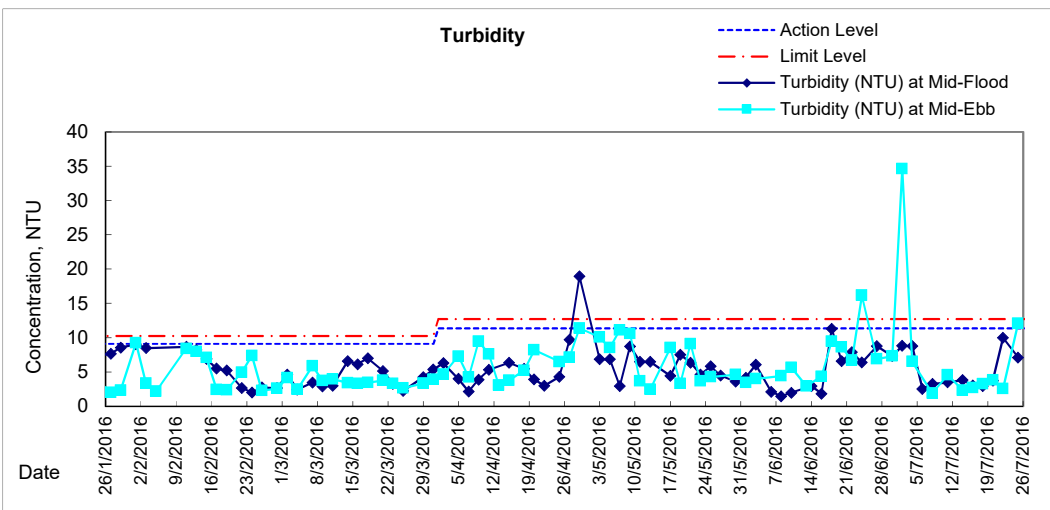
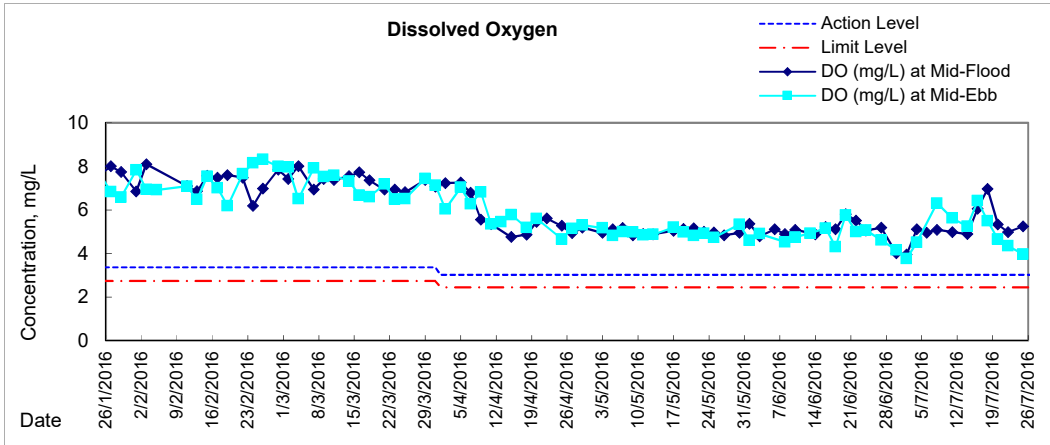
Graphic Presentation of Water Quality Result of P4 - SOC







Graphic Presentation of Water Quality Result of C7 - Windsor House



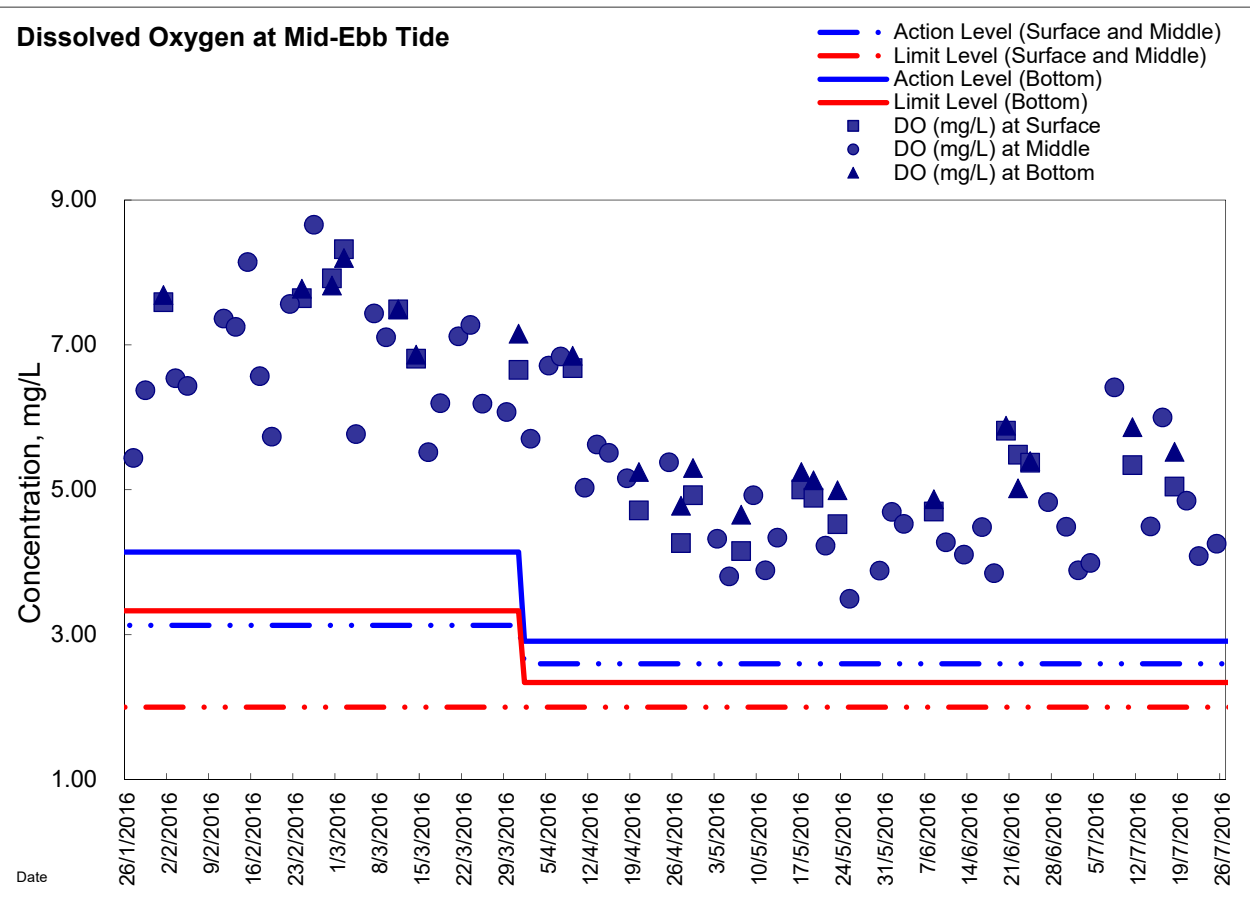
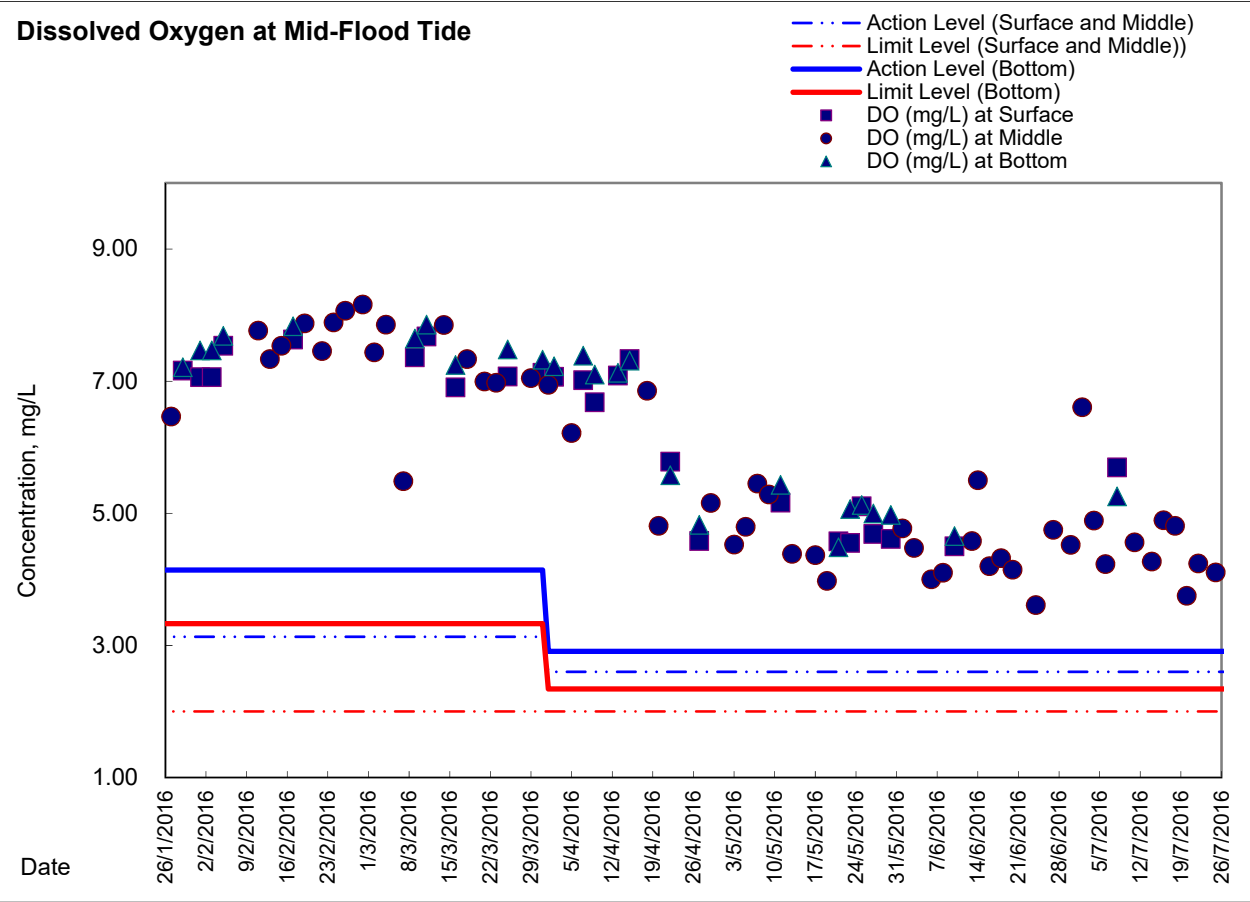


**Water Monitoring Result at C6 - Excelsior Hotel
Mid-Flood Tide**

Date	Time	Weather Condition	Sampling Depth		Water Temperature			pH			Salinity			DO Saturation			DO		
					°C			-			ppt		%		mg/L				
			m	Value	Average	Value	Average	Value	Average	Value	Average	Value	Average	Value	Average				
27/6/2016	12:00	Sunny	Surface	1.0	28.70	28.70	28.7	8.65	8.65	8.7	25.26	25.26	25.3	84.1	85.5	84.8	5.65	5.74	5.70
	-		Middle	2.0	-	-	-	-	-	-	-	-	-	-	-	-	-	-	-
	12:02		Bottom	3.0	28.50	28.50	28.5	8.69	8.69	8.7	25.44	25.44	25.4	77.1	78.8	78.0	5.20	5.31	5.26
30/6/2016	-	Fine	Surface	-	-	-	-	-	-	-	-	-	-	-	-	-	-	-	-
	16:29		Middle	1.5	28.80	28.80	28.8	8.21	8.21	8.2	21.04	21.04	21.0	66.7	66.2	66.5	4.58	4.54	4.56
	-		Bottom	-	-	-	-	-	-	-	-	-	-	-	-	-	-	-	-
2/7/2016	-	Cloudy	Surface	-	-	-	-	-	-	-	-	-	-	-	-	-	-	-	-
	16:03		Middle	1.5	28.10	28.10	28.1	8.55	8.55	8.6	22.24	22.24	22.2	62.8	61.1	62.0	4.33	4.21	4.27
	-		Bottom	-	-	-	-	-	-	-	-	-	-	-	-	-	-	-	-
4/7/2016	-	Cloudy	Surface	-	-	-	-	-	-	-	-	-	-	-	-	-	-	-	-
	20:05		Middle	1.5	28.00	28.00	28.0	8.17	8.17	8.2	22.08	22.08	22.1	70.7	70.8	70.8	4.89	4.90	4.90
	-		Bottom	-	-	-	-	-	-	-	-	-	-	-	-	-	-	-	-
6/7/2016	-	Cloudy	Surface	-	-	-	-	-	-	-	-	-	-	-	-	-	-	-	-
	17:53		Middle	1.0	27.50	27.50	27.5	8.26	8.26	8.3	22.00	22.00	22.0	68.7	68.9	68.8	4.80	4.82	4.81
	-		Bottom	-	-	-	-	-	-	-	-	-	-	-	-	-	-	-	-
8/7/2016	-	Fine	Surface	-	-	-	-	-	-	-	-	-	-	-	-	-	-	-	-
	21:25		Middle	1.0	29.90	29.90	29.9	8.12	8.12	8.1	22.73	22.73	22.7	55.8	56.5	56.2	3.73	3.77	3.75
	-		Bottom	-	-	-	-	-	-	-	-	-	-	-	-	-	-	-	-
11/7/2016	-	Cloudy	Surface	-	-	-	-	-	-	-	-	-	-	-	-	-	-	-	-
	20:52		Middle	1.0	27.30	27.30	27.3	8.10	8.10	8.1	23.95	23.95	24.0	61.1	61.4	61.3	4.23	4.25	4.24
	-		Bottom	-	-	-	-	-	-	-	-	-	-	-	-	-	-	-	-
14/7/2016	-	Cloudy	Surface	-	-	-	-	-	-	-	-	-	-	-	-	-	-	-	-
	1:30		Middle	1.5	27.00	27.00	27.0	8.30	8.30	8.3	23.35	23.35	23.4	58.5	59.2	58.9	4.08	4.13	4.11
	-		Bottom	-	-	-	-	-	-	-	-	-	-	-	-	-	-	-	-
16/7/2016	-	Fine	Surface	-	-	-	-	-	-	-	-	-	-	-	-	-	-	-	-
	16:20		Middle	1.5	28.00	28.00	28.0	8.36	8.36	8.4	24.96	24.96	25.0	99.4	95.5	97.5	6.75	6.49	6.62
	-		Bottom	-	-	-	-	-	-	-	-	-	-	-	-	-	-	-	-
18/7/2016	16:05	Fine	Surface	1.0	28.60	28.60	28.6	8.44	8.44	8.4	24.04	24.04	24.0	95.1	97.2	96.2	6.47	6.58	6.53
	-		Middle	2.0	-	-	-	-	-	-	-	-	-	-	-	-	-	-	-
	16:07		Bottom	3.0	28.80	28.80	28.8	8.43	8.43	8.4	26.61	26.61	26.6	102.0	102.6	102.3	6.93	6.97	6.95
20/7/2016	-	Cloudy	Surface	-	-	-	-	-	-	-	-	-	-	-	-	-	-	-	-
	18:35		Middle	1.0	27.90	27.80	27.9	7.92	7.92	7.9	24.91	24.91	24.9	72.0	72.6	72.3	4.91	4.96	4.94
	-		Bottom	-	-	-	-	-	-	-	-	-	-	-	-	-	-	-	-
22/7/2016	-	Fine	Surface	-	-	-	-	-	-	-	-	-	-	-	-	-	-	-	-
	20:40		Middle	1.5	26.60	26.60	26.6	7.60	7.60	7.6	26.62	26.62	26.6	60.3	60.6	60.5	4.14	4.16	4.15
	-		Bottom	-	-	-	-	-	-	-	-	-	-	-	-	-	-	-	-
25/7/2016	-	Fine	Surface	-	-	-	-	-	-	-	-	-	-	-	-	-	-	-	-
	10:45		Middle	1.5	27.50	27.50	27.5	8.07	8.07	8.1	30.28	30.28	30.3	83.1	83.5	83.3	5.60	5.62	5.61
	-		Bottom	-	-	-	-	-	-	-	-	-	-	-	-	-	-	-	-

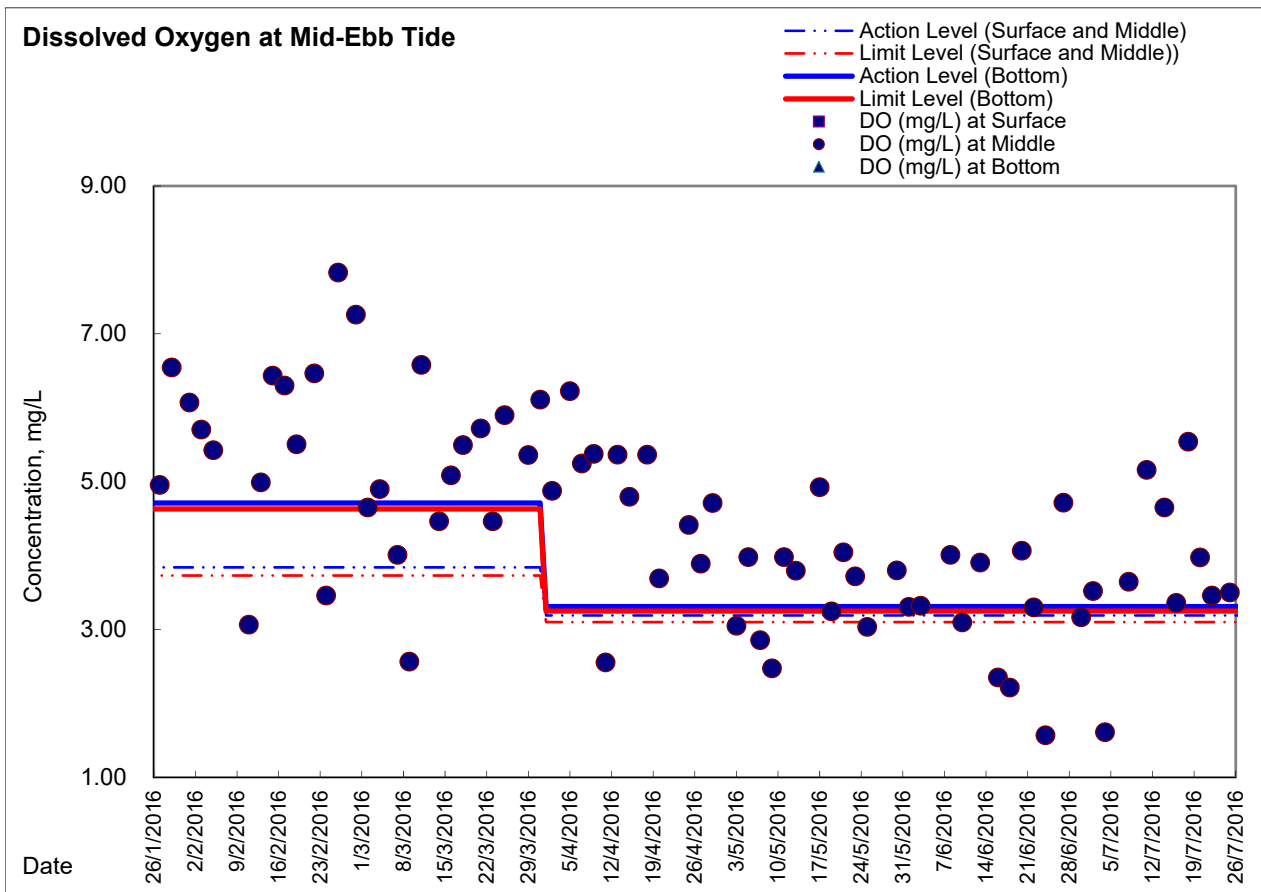
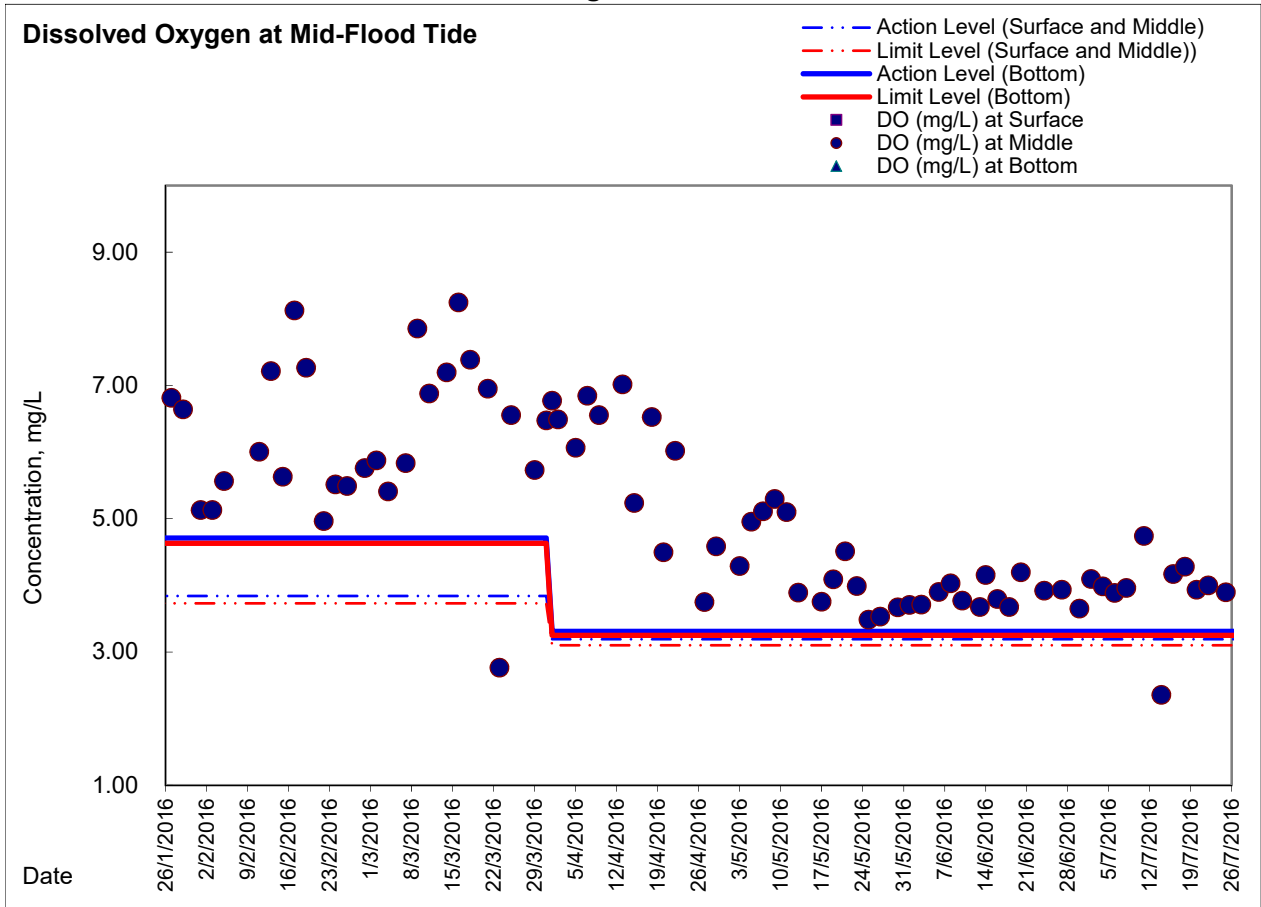
Remarks:
Single underline denotes exceedance over Action Level.
Double underline denotes exceedance over Limit Level.

Graphic Presentation of Enhanced Water Monitoring Results (DO) at C6 - Excelsior Hotel





Graphic Presentation of Enhanced Water Monitoring Results (DO) at Ex-WPCWA SW - South-western corners of ex-Public Cargo Works Area





Graphic Presentation of Enhanced Water Monitoring Results (DO) at Ex-WPCWA SE - South-eastern corners of ex-Public Cargo Works Area

